

REVIEWED

By Sarah Collins at 3:33 pm, Jul 17, 2023

TS

7/14/2023

Worklist: 6427

<u>LAB CASE</u>	<u>ITEM</u>	<u>ITEM TYPE</u>	<u>DESCRIPTION</u>	
M2023-2187	1	BCK	AM 25/AM 26 Blood MultiDrug/THC Screen by LC-QQQ	
M2023-2188	1	BCK	AM 25/AM 26 Blood MultiDrug/THC Screen by LC-QQQ	
M2023-2190	1	BCK	AM 25/AM 26 Blood MultiDrug/THC Screen by LC-QQQ	
M2023-2223	2	BCK	AM 25/AM 26 Blood MultiDrug/THC Screen by LC-QQQ	
M2023-2236	1	BCK	AM 25/AM 26 Blood MultiDrug/THC Screen by LC-QQQ	
M2023-2303	1	BCK	AM 25/AM 26 Blood MultiDrug/THC Screen by LC-QQQ	
M2023-2314	1	BCK	AM 25/AM 26 Blood MultiDrug/THC Screen by LC-QQQ	
M2023-2316	1	BCK	AM 25/AM 26 Blood MultiDrug/THC Screen by LC-QQQ	
M2023-2350	2	BCK	AM 25/AM 26 Blood MultiDrug/THC Screen by LC-QQQ	
M2023-2351	2	BCK	AM 25/AM 26 Blood MultiDrug/THC Screen by LC-QQQ	
M2023-2368	1	BCK	AM 25/AM 26 Blood MultiDrug/THC Screen by LC-QQQ	
M2023-2382	1	BCK	AM 25/AM 26 Blood MultiDrug/THC Screen by LC-QQQ	
M2023-2421	1	BCK	AM 25/AM 26 Blood MultiDrug/THC Screen by LC-QQQ	
M2023-2470	1	BCK	AM 25/AM 26 Blood MultiDrug/THC Screen by LC-QQQ	
M2023-2483	5	BCK	AM 25/AM 26 Blood MultiDrug/THC Screen by LC-QQQ	
M2023-2497	3	BCK	AM 25/AM 26 Blood MultiDrug/THC Screen by LC-QQQ	
M2023-2519	1	BCK	AM 25/AM 26 Blood MultiDrug/THC Screen by LC-QQQ	
M2023-2538	2	BCK	AM 25/AM 26 Blood MultiDrug/THC Screen by LC-QQQ	
M2023-2603	2	BCK	AM 25/AM 26 Blood MultiDrug/THC Screen by LC-QQQ	
M2023-2619	1	BCK	AM 25/AM 26 Blood MultiDrug/THC Screen by LC-QQQ	
M2023-2626	2	BCK	AM 25/AM 26 Blood MultiDrug/THC Screen by LC-QQQ	

Worklist: 6427

TS

<u>LAB CASE</u>	<u>ITEM</u>	<u>ITEM TYPE</u>	<u>DESCRIPTION</u>	
M2023-2649	1	BCK	AM 25/AM 26 Blood MultiDrug/THC Screen by LC-QQQ	
M2023-2757	2	BCK	AM 25/AM 26 Blood MultiDrug/THC Screen by LC-QQQ	
M2023-2759	2	BCK	AM 25/AM 26 Blood MultiDrug/THC Screen by LC-QQQ	
M2023-2773	2	BCK	AM 25/AM 26 Blood MultiDrug/THC Screen by LC-QQQ	
P2023-0796	2	BCK	AM 25/AM 26 Blood MultiDrug/THC Screen by LC-QQQ	
P2023-1497	1	BCK	AM 25/AM 26 Blood MultiDrug/THC Screen by LC-QQQ	
P2023-1520	1	BCK	AM 25/AM 26 Blood MultiDrug/THC Screen by LC-QQQ	
P2023-1596	1	BCK	AM 25/AM 26 Blood MultiDrug/THC Screen by LC-QQQ	
P2023-1607	1	BCK	AM 25/AM 26 Blood MultiDrug/THC Screen by LC-QQQ	
P2023-1675	1	BCK	AM 25/AM 26 Blood MultiDrug/THC Screen by LC-QQQ	
P2023-1719	1	BLOOD	AM 25/AM 26 Blood MultiDrug/THC Screen by LC-QQQ	
P2023-1788	2	BCK	AM 25/AM 26 Blood MultiDrug/THC Screen by LC-QQQ	
P2023-1789	1	BCK	AM 25/AM 26 Blood MultiDrug/THC Screen by LC-QQQ	
P2023-1790	1	BCK	AM 25/AM 26 Blood MultiDrug/THC Screen by LC-QQQ	
P2023-1794	1	BCK	AM 25/AM 26 Blood MultiDrug/THC Screen by LC-QQQ	
P2023-1795	1	BCK	AM 25/AM 26 Blood MultiDrug/THC Screen by LC-QQQ	
P2023-1796	1	BCK	AM 25/AM 26 Blood MultiDrug/THC Screen by LC-QQQ	
P2023-1797	1	BCK	AM 25/AM 26 Blood MultiDrug/THC Screen by LC-QQQ	
P2023-1831	1	BCK	AM 25/AM 26 Blood MultiDrug/THC Screen by LC-QQQ	
P2023-1835	1	BCK	AM 25/AM 26 Blood MultiDrug/THC Screen by LC-QQQ	
P2023-1867	1	BCK	AM 25/AM 26 Blood MultiDrug/THC Screen by LC-QQQ	
P2023-1879	1	BCK	AM 25/AM 26 Blood MultiDrug/THC Screen by LC-QQQ	
P2023-1885	1	BCK	AM 25/AM 26 Blood MultiDrug/THC Screen by LC-QQQ	

Worklist: 6427

TS

<u>LAB CASE</u>	<u>ITEM</u>	<u>ITEM TYPE</u>	<u>DESCRIPTION</u>	
P2023-1892	1	BCK	AM 25/AM 26 Blood MultiDrug/THC Screen by LC-QQQ	
P2023-1893	1	BCK	AM 25/AM 26 Blood MultiDrug/THC Screen by LC-QQQ	
P2023-1894	1	BCK	AM 25/AM 26 Blood MultiDrug/THC Screen by LC-QQQ	
P2023-1904	1	BLOOD	AM 25/AM 26 Blood MultiDrug/THC Screen by LC-QQQ	
P2023-1919	1	BCK	AM 25/AM 26 Blood MultiDrug/THC Screen by LC-QQQ	
P2023-1920	1	BCK	AM 25/AM 26 Blood MultiDrug/THC Screen by LC-QQQ	
P2023-1923	1	BCK	AM 25/AM 26 Blood MultiDrug/THC Screen by LC-QQQ	
P2023-1931	1	BCK	AM 25/AM 26 Blood MultiDrug/THC Screen by LC-QQQ	
P2023-1932	1	BCK	AM 25/AM 26 Blood MultiDrug/THC Screen by LC-QQQ	
P2023-1933	1	BCK	AM 25/AM 26 Blood MultiDrug/THC Screen by LC-QQQ	
P2023-1934	1	BCK	AM 25/AM 26 Blood MultiDrug/THC Screen by LC-QQQ	
P2023-1945	1	BCK	AM 25/AM 26 Blood MultiDrug/THC Screen by LC-QQQ	
P2023-1984	1	BCK	AM 25/AM 26 Blood MultiDrug/THC Screen by LC-QQQ	
P2023-1985	1	BCK	AM 25/AM 26 Blood MultiDrug/THC Screen by LC-QQQ	

AM# 25: Multi-Drug Screen in Blood and Urine by LC-MS/MS

Extraction Date: 07/10/2023

Analyst: Tamara Salazar

Plate lot#: 230119

Plate Retest Date: 07-19-23

Mobile phase A: 10mM Amm Form in LCMS Water

Mobile phase B: 0.1% Formic Acid in MeOH

Blank Blood Lot: Lampire 23A52594

Blank Urine Lot:

LCMS-QQQ ID: 069901

Column: Phenomenex Phenyl Hexyl (4.6x50mm, 2.6um)

Pre-Analytic:

- 1. Check levels of mobile phases and needle wash refill as needed. Ensure waste is not full.
- 2. Ensure correct column is installed and begin mobile phase flow allow to equilibrate ~ 30 minutes.

Analytic:

- 1. Remove standards, plate, controls, and samples from cold storage. Allow to reach room temperature.
- 2. **Urine Hydrolysis: In blank well, add 250µL urine, 40µL BG Turbo, and 100µL Instant Buffer I. Place on plate shaker for 5 minutes.**
- 3. Using a calibrated pipette, pipette 250µL blood or 250µL hydrolyzed urine in wells of analytical (standards) plate. Pipette ID: 42
- 4. Pipette **250µL 0.5 M ammonium hydroxide** in wells of analytical plate.
- 5. Place on shaking incubator at ambient temp., 900rpm for 15 minutes.
- 6. Transfer **200-450µL of blood+base and urine+base (if applicable)** mixture to corresponding wells of SLE+ plate. Amount transferred: 250uL
- 7. Apply positive pressure for approx. 10-15 seconds (or until no liquid remains on top of sorbent). **(Load at 85-100 PSI- Selector to the right).**
- 8. Wait 5 minutes.
- 9. Add **900uL ethyl acetate.**
- 10. Wait 5 minutes.
- 11. Apply positive pressure for approx. 15 seconds. **(10-15 PSI- Selector to the left).**
- 12. Add **900uL ethyl acetate.**
- 13. Wait 5 minutes.
- 14. Apply positive pressure for approx. 15 seconds. **(10-15 PSI- Selector to the left).**
- 15. Remove plate containing eluate. Place on SPE Dry and evaporate to dryness at approx. 35°C.
- 16. Add 50µL 1% HCl in MeOH to wells and place plate cover on plate before drying. This step is required for urine samples, but optional for blood samples.
- 17. Reconstitute in **100µL 20% LC MeOH** and heat seal plate with foil. Place in autosampler and run worklist.

Post-Analytic

- 1. Open quantitation software and create a new quantitation batch.
- 2. Make necessary changes to integration limits
- 3. Evaluate samples, S/N of primary transition >5 and S/N of secondary transition >3 or evaluation of peak symmetry and resolution. Within +/- 2% or 0.1 min RT of administrative control. Calculated concentration of 5 or greater or 2-5 for discretionary range.
- 4. Did all QCs pass for each analyte? If no, describe issue in comments (below).
- 5. Central File Packet to include: LIMS Worklist, Method Checklist, Calibration and Control Reports

COMMENTS:

Analytical Plate Map

TS

	1	2	3	4	5	6	7	8	9	10	11	12
A	IS + Cal. 1	M2023-2303-1	M2023-2470-1	M2023-2649-1	P2023-1607-1	P2023-1796-1	P2023-1893-1	P2023-1933-1	IS + Sample	IS + Sample	IS + Sample	IS + Sample
B	IS + Cal. 1	M2023-2314-1	M2023-2483-5	M2023-2757-2	P2023-1675-1	P2023-1797-1	P2023-1894-1	P2023-1934-1	IS + Sample	IS + Sample	IS + Sample	IS + Sample
C	Neg Blood	M2023-2316-1	M2023-2497-3	M2023-2759-2	P2023-1719-1	P2023-1831-1	P2023-1904-1	P2023-1945-1	IS + Sample	IS + Sample	IS + Sample	IS + Sample
D	M2023-2187-1	M2023-2350-2	M2023-2519-1	M2023-2773-2	P2023-1788-2	P2023-1835-1	P2023-1919-1	P2023-1984-1	IS + Sample	IS + Sample	IS + Sample	IS + Sample
E	M2023-2188-1	M2023-2351-2	M2023-2538-2	P2023-0796-2	P2023-1789-1	P2023-1867-1	P2023-1920-1	P2023-1985-1	IS + Sample	IS + Sample	IS + Sample	IS + Sample
F	M2023-2190-1	M2023-2368-1	M2023-2603-2	P2023-1497-1	P2023-1790-1	P2023-1879-1	P2023-1923-1	IS + Sample	IS + Sample	IS + Sample	IS + Sample	IS + Sample
G	M2023-2223-2	M2023-2382-1	M2023-2619-1	P2023-1520-1	P2023-1794-1	P2023-1885-1	P2023-1931-1	IS + Sample	IS + Sample	IS + Sample	IS + Sample	IS + Cal. 1
H	M2023-2236-1	M2023-2421-1	M2023-2626-2	P2023-1596-1	P2023-1795-1	P2023-1892-1	P2023-1932-1	IS + Sample	IS + Sample	IS + Sample	IS + Sample	IS + Cal. 1

All wells to contain 60 µl of residual DMSO

SLE Plate Map

TS

	1	2	3	4	5	6	7	8	9	10	11	12
A	IS + Cal. 1	M2023-2303-1	M2023-2470-1	M2023-2649-1	P2023-1607-1	P2023-1796-1	P2023-1893-1*	P2023-1933-1	IS + Sample	IS + Sample	IS + Sample	IS + Sample
B	IS + Cal. 1	M2023-2314-1	M2023-2483-5	M2023-2757-2	P2023-1675-1	P2023-1797-1	P2023-1894-1	P2023-1934-1	IS + Sample	IS + Sample	IS + Sample	IS + Sample
C	Neg Blood	M2023-2316-1	M2023-2497-3	M2023-2759-2	P2023-1719-1	P2023-1831-1	P2023-1904-1	P2023-1945-1	IS + Sample	IS + Sample	IS + Sample	IS + Sample
D	M2023-2187-1	M2023-2350-2	M2023-2519-1	M2023-2773-2	P2023-1788-2	P2023-1835-1	P2023-1919-1	P2023-1984-1	IS + Sample	IS + Sample	IS + Sample	IS + Sample
E	M2023-2188-1	M2023-2351-2	M2023-2538-2	P2023-0796-2	P2023-1789-1	P2023-1867-1	P2023-1920-1	P2023-1985-1	IS + Sample	IS + Sample	IS + Sample	IS + Sample
F	M2023-2190-1	M2023-2368-1	M2023-2603-2	P2023-1497-1	P2023-1790-1	P2023-1879-1	P2023-1923-1	M2023-2626-2*	IS + Sample	IS + Sample	IS + Sample	IS + Sample
G	M2023-2223-2	M2023-2382-1	M2023-2619-1	P2023-1520-1	P2023-1794-1	P2023-1885-1	P2023-1931-1	P2023-1893-1*	IS + Sample	IS + Sample	IS + Sample	IS + Cal. 1
H	M2023-2236-1	M2023-2421-1	M2023-2626-2*	P2023-1596-1	P2023-1795-1	P2023-1892-1	P2023-1932-1	IS + Sample	IS + Sample	IS + Sample	IS + Sample	IS + Cal. 1

*Sample moved during step 6 of the extraction due to blood clot.

TS



AM #25 Multi-Drug Screen. Results

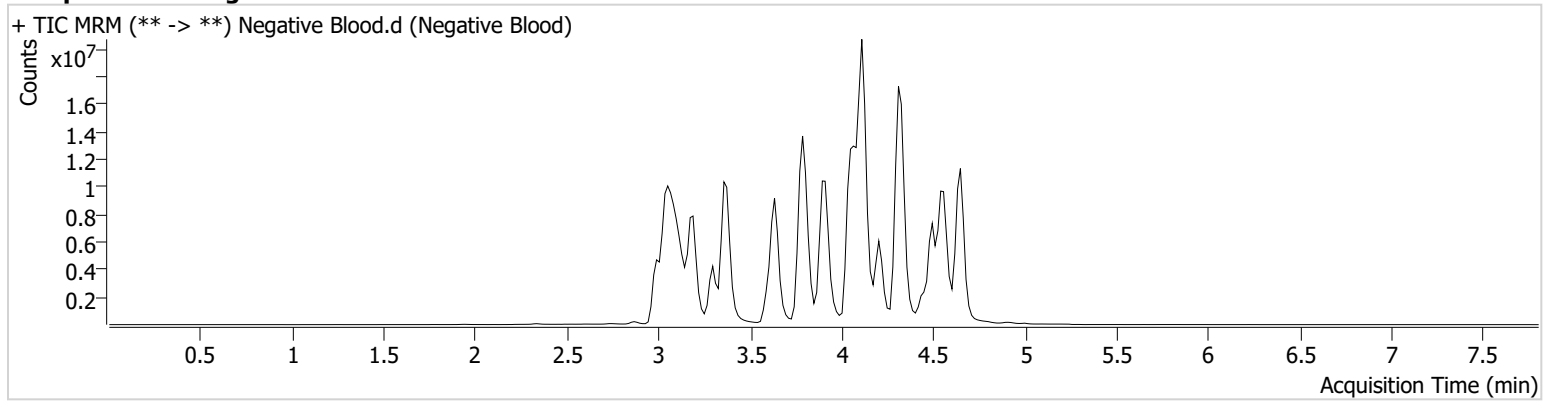
Batch results D:\MassHunter\Data\2023\AM 25 26\071023 AM 25 TS\QuantResults\AM 25 TS.batch.bin
Calibration Last Update 7/14/2023 10:02:13 AM

Instrument Falco (069901)
Type Sample
Acq. Method AM 25 MDS.m
Sample Position P2-C1
Injection Volume 5
Acq. Date-Time 7/10/2023 1:19:48 PM
Sample Info.

Data File Negative Blood.d
Sample Negative Blood
Operator Tamara Salazar
Comment

Only drugs and concentrations listed on the laboratory report itself are appropriate to be used for interpretation purposes. Any drugs or values included in the notes but not included on the report are used by laboratory personnel to make determinations/reach conclusions within the confines of the methods.

Sample Chromatogram



TS



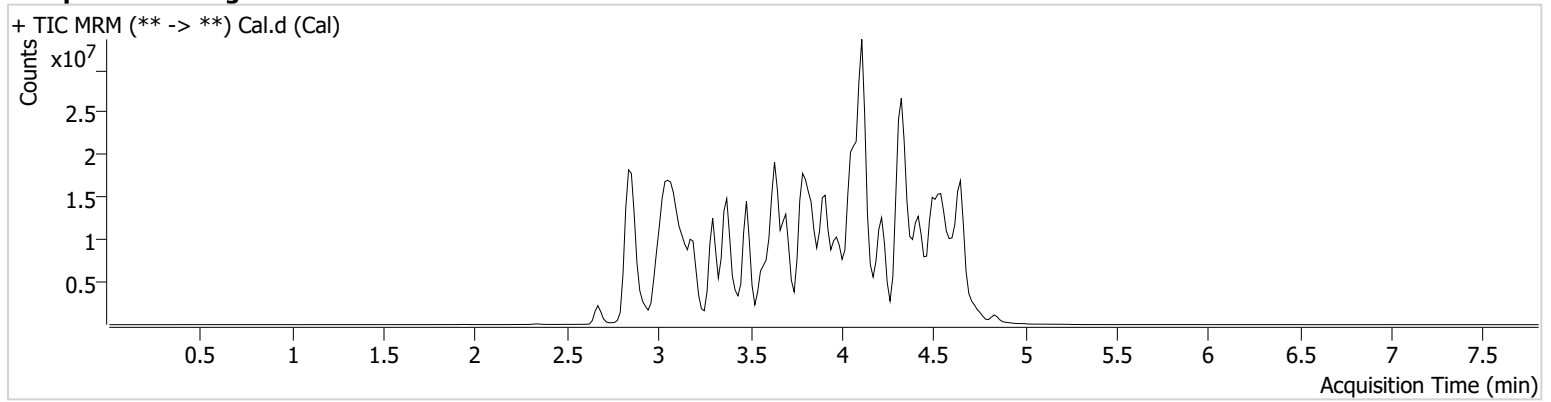
AM #25 Multi-Drug Screen. Results

Batch results D:\MassHunter\Data\2023\AM 25 26\071023 AM 25 TS\QuantResults\AM 25 TS.batch.bin
Calibration Last Update 7/14/2023 10:02:13 AM

Instrument Falco (069901) **Data File** Cal.d
Type Cal **Sample** Cal
Acq. Method AM 25 MDS.m **Operator** Tamara Salazar
Sample Position P2-B1 **Comment**
Injection Volume 5
Acq. Date-Time 7/10/2023 1:02:46 PM
Sample Info.

Only drugs and concentrations listed on the laboratory report itself are appropriate to be used for interpretation purposes. Any drugs or values included in the notes but not included on the report are used by laboratory personnel to make determinations/reach conclusions within the confines of the methods.

Sample Chromatogram



Name	RT	Resp.	S/N	Ratio	S/N	ISTD Resp.	Final Conc.
10-OH-Carbamazepine	3.779	4300041	382.66	95.4	544.01	25029436	10.0000 ng/ml
6-MAM	3.035	73224	38987.96	62.3	51188.85	1644110	10.0000 ng/ml
7-aminoclonazepam	3.607	1242393	287.69	81.0	563.45	5245326	10.0000 ng/ml
7-aminoflunitrazepam	3.806	2452209	1686.99	23.7	7874.06	5245326	10.0000 ng/ml
9-Hydroxyrisperidone	3.907	11256168	1263.17	2.4	∞	37511159	10.0000 ng/ml
Acetyl Fentanyl	3.911	509762	163.32	71.7	300558.37	34189870	10.0000 ng/ml
Acetyl Norfentanyl	3.013	497277	146.41	35.5	377.00	34189870	10.0000 ng/ml
a-hydroxyalprazolam	4.511	413879	94.54	63.6	368.25	5245326	10.0000 ng/ml
alpha-hydroxymidazolam	4.587	2480041	523.28	60.7	369.81	5245326	10.0000 ng/ml
Alpha-PHP	3.872	4588169	3047.24	37.1	2908.00	34189870	10.0000 ng/ml
alpha-PVP	3.612	5275668	562.82	50.6	505.04	13244925	10.0000 ng/ml
Alprazolam	4.622	2939593	325.23	95.3	815.50	23578827	10.0000 ng/ml
Amitriptyline	4.456	1861659	41.46	69.7	328.40	5395528	10.0000 ng/ml
Amphetamine	3.016	3755356	690.86	228.5	3164.59	13244925	10.0000 ng/ml
Benzoylecgonine	3.406	346219	497.14	33.9	105.28	513023	10.0000 ng/ml
Brompheniramine	4.066	141614	99994.75	998.8	913.49	50302156	10.0000 ng/ml
Buprenorphine	4.568	1190285	894.47	12.5	105472.27	3715313	10.0000 ng/ml
Bupropion	3.826	5648939	987.85	62.1	617.74	22663661	10.0000 ng/ml
Carbamazepine	4.243	13086176	5772.11	89.8	1091.36	441882	10.0000 ng/ml
Carisoprodol	4.227	2085660	1796.02	55.2	1001.89	9823048	10.0000 ng/ml
Chlordiazepoxide	4.731	1983799	530.76	90.7	2448.24	23578827	10.0000 ng/ml
Chlorpheniramine	3.977	10236673	1414.71	0.3	19.93	11689478	10.0000 ng/ml
Chlorpromazine	4.635	1709472	733.83	87.4	366.36	6857398	10.0000 ng/ml
Citalopram	4.080	3774965	4973.36	36.7	∞	50302156	10.0000 ng/ml
Clomipramine	4.651	2303240	12714.63	72.1	75925.05	50302156	10.0000 ng/ml
Clonazepam	4.436	1894637	385.58	35.3	355.11	441882	10.0000 ng/ml
Clonazolam	4.371	1415796	1269863.08	37.0	432875.46	23578827	10.0000 ng/ml
Clozapine	4.311	4983956	1189.99	74.5	844.91	19690484	10.0000 ng/ml
Cocaethylene	3.835	6034640	3451878.32	49.4	5260.04	27950722	10.0000 ng/ml
Cocaine	3.636	6067986	1285.39	18.3	1315.11	27950722	10.0000 ng/ml

TS



AM #25 Multi-Drug Screen. Results

Name	RT	Resp.	S/N	Ratio	S/N	ISTD Resp.	Final Conc.
Codeine	3.053	165437	7800.25	91.3 Low	239.49	10233540	10.0000 ng/ml
Cyclobenzaprine	4.364	3473275	1102.65	8.2	87.34	5395528	10.0000 ng/ml
Desipramine	4.396	4860703	447.04	41.9	278.45	5395528	10.0000 ng/ml
Dextromethorphan	4.118	2490927	284.53	79.3	349.17	11689478	10.0000 ng/ml
Dextrophan	3.440	4176186	516.89	48.4	820.27	11689478	10.0000 ng/ml
Diazepam	4.839	1458698	663.56	93.7	920.52	23578827	10.0000 ng/ml
Dihydrocodeine	2.808	128219	129.64	55.5	1318.61	10233540	10.0000 ng/ml
Diphenhydramine	4.056	13612257	1351.79	29.5	1382.00	50302156	10.0000 ng/ml
DMT	3.060	445955	416.70	85.0	204.26	11689478	10.0000 ng/ml
Doxepin	4.178	2471792	828.84	48.8	96.72	26787935	10.0000 ng/ml
Doxylamine	3.700	15171689	20830.03	94.4	13665.41	11689478	10.0000 ng/ml
Duloxetine	4.346	77072	75594.82	685.9	3868.71	814095	10.0000 ng/ml
EDDP	4.116	2395897	6142.53	46.4	93.71	4322776	10.0000 ng/ml
Estazolam	4.531	8362284	890.33	49.1	1086.89	23578827	10.0000 ng/ml
Etizolam	4.632	355037	73119.84	392.5	589033.87	23578827	10.0000 ng/ml
Fentanyl	4.126	304088	68.93	56.3	4713.90	17448728	10.0000 ng/ml
Flualprazolam	4.480	1134332	740634.25	107.1	3001.38	23578827	10.0000 ng/ml
Flunitrazepam	4.544	2277565	∞	39.2	1566034.47	23578827	10.0000 ng/ml
Fluorofentanyl	4.155	464671	187.79	89.3	605.65	17448728	10.0000 ng/ml
Fluoxetine	4.345	2078282	1007.92	7.7	48.86	3277709	10.0000 ng/ml
Flurazepam	4.216	4057328	7426.59	20.8	∞	23578827	10.0000 ng/ml
Hydrocodone	3.145	2389407	1634.77	44.0	2319.63	10233540	10.0000 ng/ml
Hydromorphone	3.039	1429711	5795.30	78.8	11938.29	468526	10.0000 ng/ml
Hydroxyzine	4.508	4158236	1544.31	76.3	1074.39	19690484	10.0000 ng/ml
Imipramine	4.409	6538937	1351.69	61.1	536.53	5395528	10.0000 ng/ml
Ketamine	3.627	3104904	434.94	38.7	162.31	13061401	10.0000 ng/ml
Lamotrigine	3.625	296745	1853.82	82.6	1542.33	50302156	10.0000 ng/ml
Levamisole	3.105	3490299	10677.36	88.6	2865.72	27950722	10.0000 ng/ml
Levetiracetam	2.679	2393027	674.03	163.9	886.31	50302156	10.0000 ng/ml
Lorazepam	4.435	593135	240.61	281.6	63.39	23578827	10.0000 ng/ml
Maprotiline	4.456	1391569	93.12	86.9	152.82	5395528	10.0000 ng/ml
MDA	3.075	3357996	364.36	39.2	180.73	36845213	10.0000 ng/ml
MDEA	3.289	6049544	345.53	51.2	2381.28	36845213	10.0000 ng/ml
MDMA	3.152	6548348	839.15	51.9	540.62	36845213	10.0000 ng/ml
Meperidine	3.656	3393223	357.06	58.0	355.45	11689478	10.0000 ng/ml
Meprobamate	3.689	1377136	253.12	22.2	189.55	9823048	10.0000 ng/ml
Methadone	4.421	9485009	17208.80	45.0	337.79	4322776	10.0000 ng/ml
Methamphetamine	3.077	7185340	4743.05	38.8	126726.71	36845213	10.0000 ng/ml
Methocarbamol	3.595	555381	196534.05	99.3	197.45	4322776	10.0000 ng/ml
Methylphenidate	3.565	13636269	1409.75	20.9	285.68	23080343	10.0000 ng/ml
Metoprolol	3.485	998451	881419.30	108.8	621.01	11689478	10.0000 ng/ml
Midazolam	4.757	924532	406.68	91.5	1279.37	23578827	10.0000 ng/ml
Mirtazapine	4.009	4501254	819237.16	230.5	12283.68	11689478	10.0000 ng/ml
Mitragynine	4.231	723799	596722.63	232.2	769538.73	11689478	10.0000 ng/ml
Morphine	2.933	460154	204.11	84.7	3832.54	468526	10.0000 ng/ml
Norbuprenorphine	3.861	132238	47259.98	96.9	39624.63	3715313	10.0000 ng/ml
Nordiazepam	4.688	1876093	2445.60	59.7	169.88	23578827	10.0000 ng/ml
Norfentanyl	3.381	9727950	14474.04	33.5	79.00	34189870	10.0000 ng/ml
Norhydrocodone	3.039	133533	39.72	78.0	145.88	468526	10.0000 ng/ml
Norketamine	3.720	1272266	325.03	396.6	4496.11	13061401	10.0000 ng/ml
Normeperidine	3.642	7289510	556.03	70.7	5506.08	50302156	10.0000 ng/ml
Noroxycodone	3.007	2073534	∞	35.1	90.89	13061401	10.0000 ng/ml
Nortriptyline	4.427	1434557	1260.71	68.5	147.58	5395528	10.0000 ng/ml
O-desmethyl-tramadol	3.026	8418373	6831.95	6.5	78.08	50302156	10.0000 ng/ml
O-desmethylvenlafaxine	3.301	2397020	1001.85	590.0	11545.29	11617634	10.0000 ng/ml
Olanzapine	3.481	4501	2331.30	56.7	14.19	441882	10.0000 ng/ml
Oxazepam	4.500	2968013	345.85	72.0	536.54	16295628	10.0000 ng/ml
Oxycodone	3.051	3255031	212.73	29.7	439.63	13061401	10.0000 ng/ml
Oxymorphone	2.809	3113008	∞	26.0	8248.22	468526	10.0000 ng/ml

TS

AM #25 Multi-Drug Screen. Results



Name	RT	Resp.	S/N	Ratio	S/N	ISTD Resp.	Final Conc.
Paroxetine	4.357	438343	267.55	87.6	228.02	3277709	10.0000 ng/ml
Phenazepam	4.632	2310112	947.22	71.4	454.67	23578827	10.0000 ng/ml
Phencyclidine	3.965	8641721	22250.69	75.3	780.49	11689478	10.0000 ng/ml
Phentermine	3.215	2423715	508.90	4.2	21.47	23080343	10.0000 ng/ml
Phenytoin	4.135	896815	703.46	80.3	217.13	441882	10.0000 ng/ml
Primidone	3.489	2857736	1306334.41	94.6	299.04	441882	10.0000 ng/ml
Promethazine	4.362	7944109	615.28	27.8	2937.20	50302156	10.0000 ng/ml
Pseudoephedrine	2.862	58797575	1195.45	30.6	1250.59	36845213	10.0000 ng/ml
Quetiapine	4.477	6044954	2801974.68	58.6	1303.08	39015705	10.0000 ng/ml
Risperidone	4.107	8446835	3684789.43	10.0	3287.25	37511159	10.0000 ng/ml
Sertraline	4.576	756863	28421.13	107.0	656.88	3277709	10.0000 ng/ml
Sufentanil	4.446	263445	85858.27	79.9	1484.25	34189870	10.0000 ng/ml
Tapentadol	3.489	6686765	981.36	33.3	508.54	13061401	10.0000 ng/ml
Temazepam	4.669	5861731	6294.71	26.8	202.66	23578827	10.0000 ng/ml
Topiramate	3.864	115204	68833.63	33.9	15858.85	485864	10.0000 ng/ml
Tramadol	3.485	22777443	∞	1.7	91.85	50302156	10.0000 ng/ml
Trazodone	4.601	7776361	908.23	68.1	2307585.40	26787935	10.0000 ng/ml
Venlafaxine	3.838	11952441	60472.28	30.0	274.26	11617634	10.0000 ng/ml
Zaleplon	4.346	3650622	1684.40	69.0	567.39	39015705	10.0000 ng/ml
Zolpidem	4.330	12101814	8717.49	28.0	2596.11	39015705	10.0000 ng/ml
Zopiclone	4.200	1079812	347463.60	56.1	161440.63	4682583	10.0000 ng/ml

TS

AM# 26: Screening of THC and Metabolites in Blood and Urine by LC-MS/MS

Extraction Date: 07/12/2023

Plate lot#: 230113

Mobile phase A: 10mM Amm Form in LCMS Water

Blank Blood Lot: Lampire 23A52594

LCMS-QQQ ID: 069901

Analyst: Tamara Salazar

Plate Retest Date: 07/13/2023

Mobile phase B: 0.1% Formic acid in MeOH

Blank Urine Lot:

Column: Phenomenex Phenyl Hexyl (4.6x50mm, 2.6um)

Pre-Analytic:

- 1. Check levels of mobile phases and needle wash refill as needed. Ensure waste is not full.
- 2. Ensure correct column is installed and begin mobile phase flow allow to equilibrate ~ 30 minutes.

Analytic:

- 1. Remove standards, plate, controls, and samples from cold storage. Allow to reach room temperature.
- 2. Urine hydrolysis: add 1.5mL urine to blank plate, add 250µl 1N KOH. Shake and incubate at 40 degrees for 15 minutes.
- 3. Using a calibrated pipette, pipette 1000µL blood or 1000µL hydrolyzed urine in wells of analytical (standards) plate. Pipette ID: 42
- 4. Place on shaking incubator at ambient temp., 900rpm for 15 minutes.
- 5. Add 500µL of 0.1% formic acid in water to blood samples, and 500µL of saturated phosphate buffer to urine samples in the wells of the analytical plate.
- 6. Place on shaking incubator at ambient temp., 900rpm for 15 minutes.
- 7. Transfer 700-800µL of blood+acid or urine+acid mixture to corresponding wells of SLE+ plate. Amount transferred: 750 µL
- 8. Apply positive pressure for approx. 10-15 seconds (or until no liquid remains on top of sorbent). (*Load at 85-100 PSI- Selector to the right*)
- 9. Wait 5 minutes.
- 10. Add 2.25mL MTBE. (*Add in 3 increments of 750uL*)
- 11. Wait 5 minutes.
- 12. Apply positive pressure for approx. 15 seconds. (*10-15 PSI- Selector to the left*).
- 13. Add 2.25mL Hexane. (*Add in 3 increments of 750uL*)
- 14. Wait 5 minutes.
- 15. Apply positive pressure for approx. 15 seconds. (*10-15 PSI- Selector to the left*).
- 16. Remove plate containing eluate. Place on SPE Dry and evaporate to dryness at approx. 35°C.
- 17. Reconstitute in 100µL 100% MeOH and heat seal plate with foil. Place in autosampler and run worklist.

Post-Analytic

- 1. Create batch and process data.
- 2. Make any necessary integration changes, R² values ≥0.98 for each analyte
- 3. RT +/- 2% or 0.100 min, whichever is greater
- 4. Confirmation testing on case samples with a response for THC and OH-THC of 3ng/mL or greater and/or Carboxy-THC at 10ng/mL or greater (analyst discretion between 5-10ng/mL) may be pursued.
- 5. Did all QCs pass for each analyte? (if not, describe in comments section)
- 6. Central File Packet to include: LIMS Worklist, Method Checklist, Calibration and Control Reports

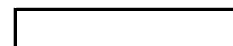
COMMENTS: Two analytical plates with the same lot number were used to accommodate the batch size. Please refer to the plate maps to determine which case samples were ran on each analytical plate.

Analytical Plate Map-Plate 1

TS

	1	2	3	4	5	6
A	IS + Cal. 1		M2023-2314-1	M2023-2483-5	M2023-2757-2	IS + QC_1
B	IS + Cal. 2	Neg Blood	M2023-2316-1	M2023-2497-3	M2023-2759-2	IS + Cal. 7
C	IS + Cal. 3	M2023-2187-1	M2023-2350-2	M2023-2519-1	M2023-2773-2	IS + Cal. 6
D	IS + Cal. 4	M2023-2188-1	M2023-2351-2	M2023-2538-2	P2023-0796-2	IS + Cal. 5
E	IS + Cal. 5	M2023-2190-1	M2023-2368-1	M2023-2603-2	P2023-1497-1	IS + Cal. 4
F	IS + Cal. 6	M2023-2223-2	M2023-2382-1	M2023-2619-1	P2023-1520-1	IS + Cal. 3
G	IS + Cal. 7	M2023-2236-1	M2023-2421-1	M2023-2626-2	P2023-1596-1	IS + Cal. 2
H	IS + QC_1	M2023-2303-1	M2023-2470-1	M2023-2649-1	IS + QC_1	IS + Cal. 1

All wells to contain 100 µl of residual DMSO

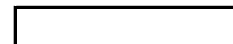


SLE Plate Map-Plate 1

TS

	1	2	3	4	5	6
A	IS + Cal. 1		M2023-2314-1	M2023-2483-5	M2023-2757-2	M2023-2519-1*
B	IS + Cal. 2	Neg Blood	M2023-2316-1	M2023-2497-3	M2023-2759-2	
C	IS + Cal. 3	M2023-2187-1	M2023-2350-2	M2023-2519-1*	M2023-2773-2	
D	IS + Cal. 4	M2023-2188-1	M2023-2351-2*	M2023-2538-2	P2023-0796-2	
E	IS + Cal. 5	M2023-2190-1	M2023-2368-1	M2023-2603-2	P2023-1497-1	
F	IS + Cal. 6	M2023-2223-2	M2023-2382-1	M2023-2619-1	P2023-1520-1	
G	IS + Cal. 7	M2023-2236-1	M2023-2421-1	M2023-2626-2	P2023-1596-1	
H	IS + QC_1	M2023-2303-1	M2023-2470-1	M2023-2649-1	M2023-2351-2	

*Sample moved during step 7 of the extraction process due to a clot



TS



AM #26 Cannabinoids Screen Results

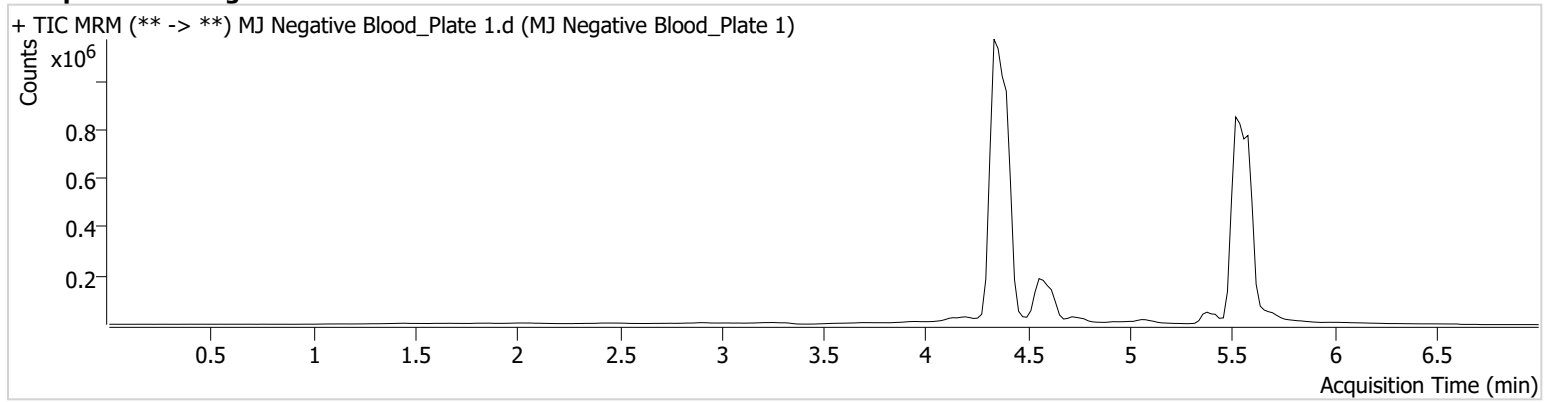
Batch results D:\MassHunter\Data\2023\AM 25 26\071223 AM 26 TS\QuantResults\AM 26 Plate 1.batch.bin
Calibration Last Update 7/13/2023 7:47:14 AM

Instrument Falco (069901)
Type Sample
Acq. Method AM 26 THC.m
Sample Position P1-B2
Injection Volume 10
Acq. Date-Time 7/12/2023 2:06:19 PM
Sample Info.

Data File MJ Negative Blood_Plate 1.d
Sample MJ Negative Blood_Plate 1
Operator Tamara Salazar
Comment

Only drugs and concentrations listed on the laboratory report itself are appropriate to be used for interpretation purposes. Any drugs or values included in the notes but not included on the report are used by laboratory personnel to make determinations/reach conclusions within the confines of the methods.

Sample Chromatogram



TS



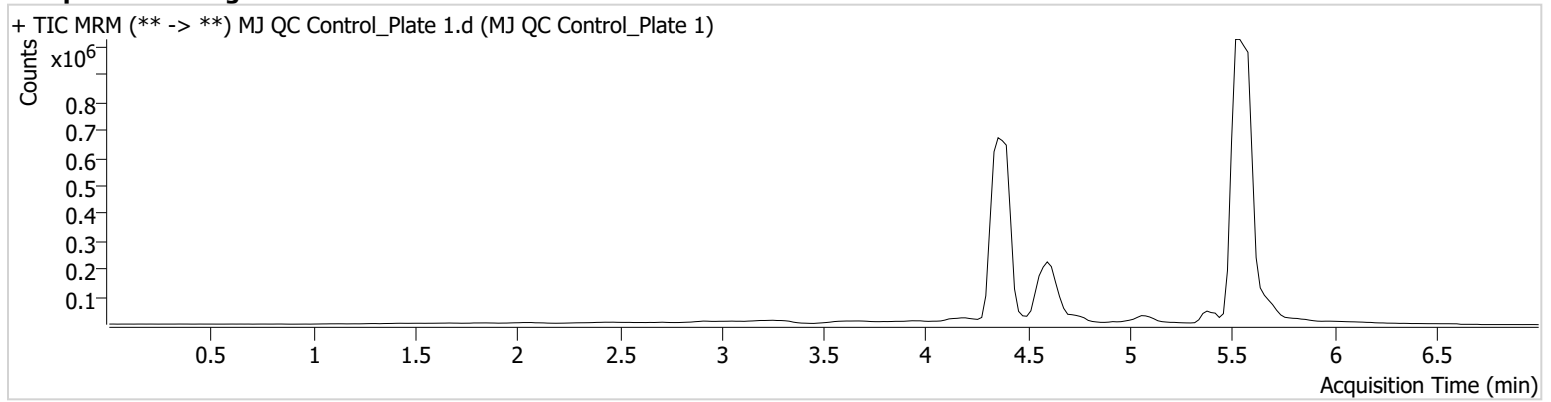
AM #26 Cannabinoids Screen Results

Batch results D:\MassHunter\Data\2023\AM 25 26\071223 AM 26 TS\QuantResults\AM 26 Plate 1.batch.bin
Calibration Last Update 7/13/2023 7:47:14 AM

Instrument Falco (069901) **Data File** MJ QC Control_Plate 1.d
Type QC **Sample** MJ QC Control_Plate 1
Acq. Method AM 26 THC.m **Operator** Tamara Salazar
Sample Position P1-H1 **Comment**
Injection Volume 10
Acq. Date-Time 7/12/2023 1:51:09 PM
Sample Info.

Only drugs and concentrations listed on the laboratory report itself are appropriate to be used for interpretation purposes. Any drugs or values included in the notes but not included on the report are used by laboratory personnel to make determinations/reach conclusions within the confines of the methods.

Sample Chromatogram



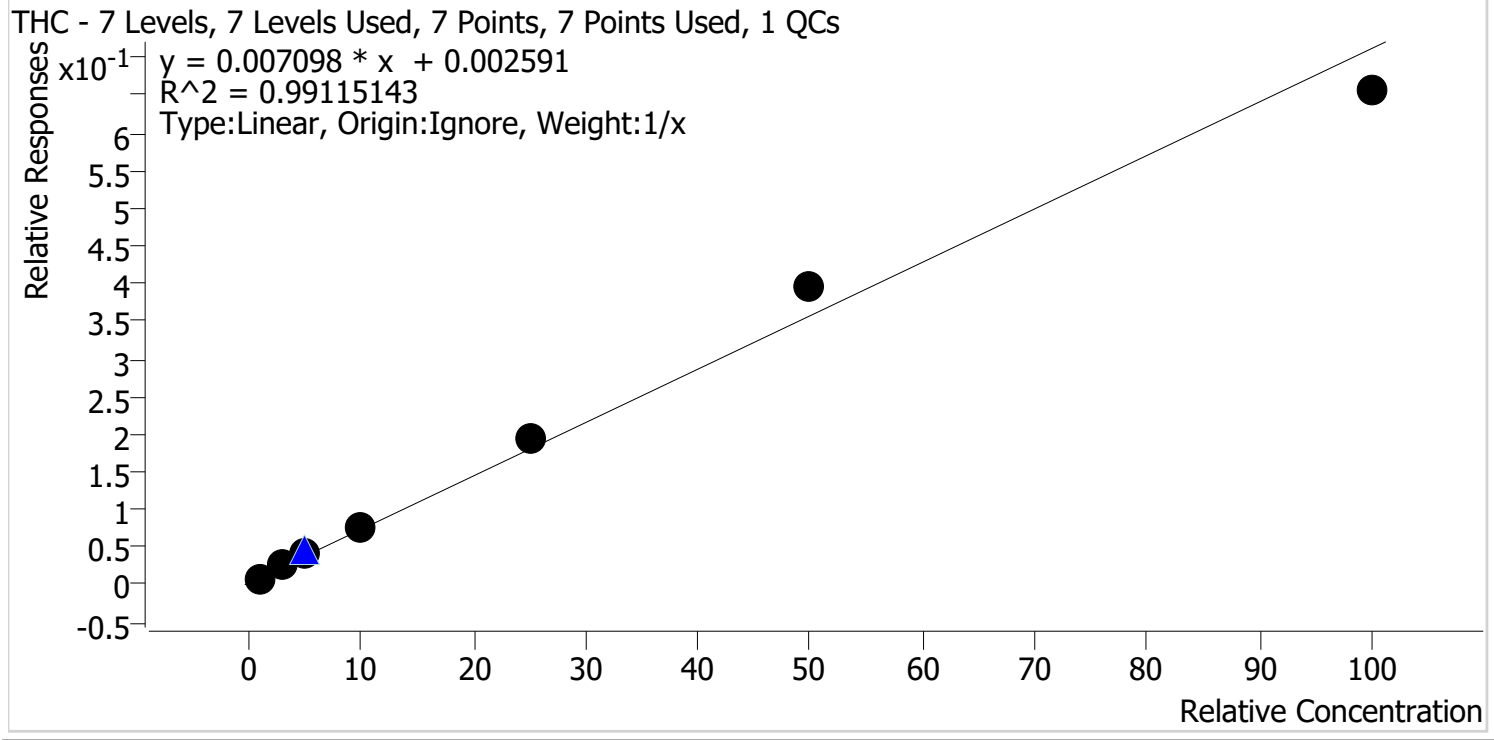
Name	RT	Resp.	S/N	Ratio	S/N	ISTD Resp.	Final Conc.
THC	5.590	9627	38.89	238.9 High	∞	217544	5.8694 ng/ml
THC-COOH	4.616	181017	669.50	157.4	∞	919865	16.2422 ng/ml
THC-OH	4.402	45530	∞	697.5	∞	4014824	4.4846 ng/ml

TS



AM #26 Cannabinoids Screen Calibration Curve Report

Batch results D:\MassHunter\Data\2023\AM 25 26\071223 AM 26 TS\QuantResults\AM 26 Plate 1.batch.bin
 Last Cal. Update 7/13/2023 7:47 AM
 Analyst Name ISP\Datastor
 Analyte THC Internal Standard THC-D3



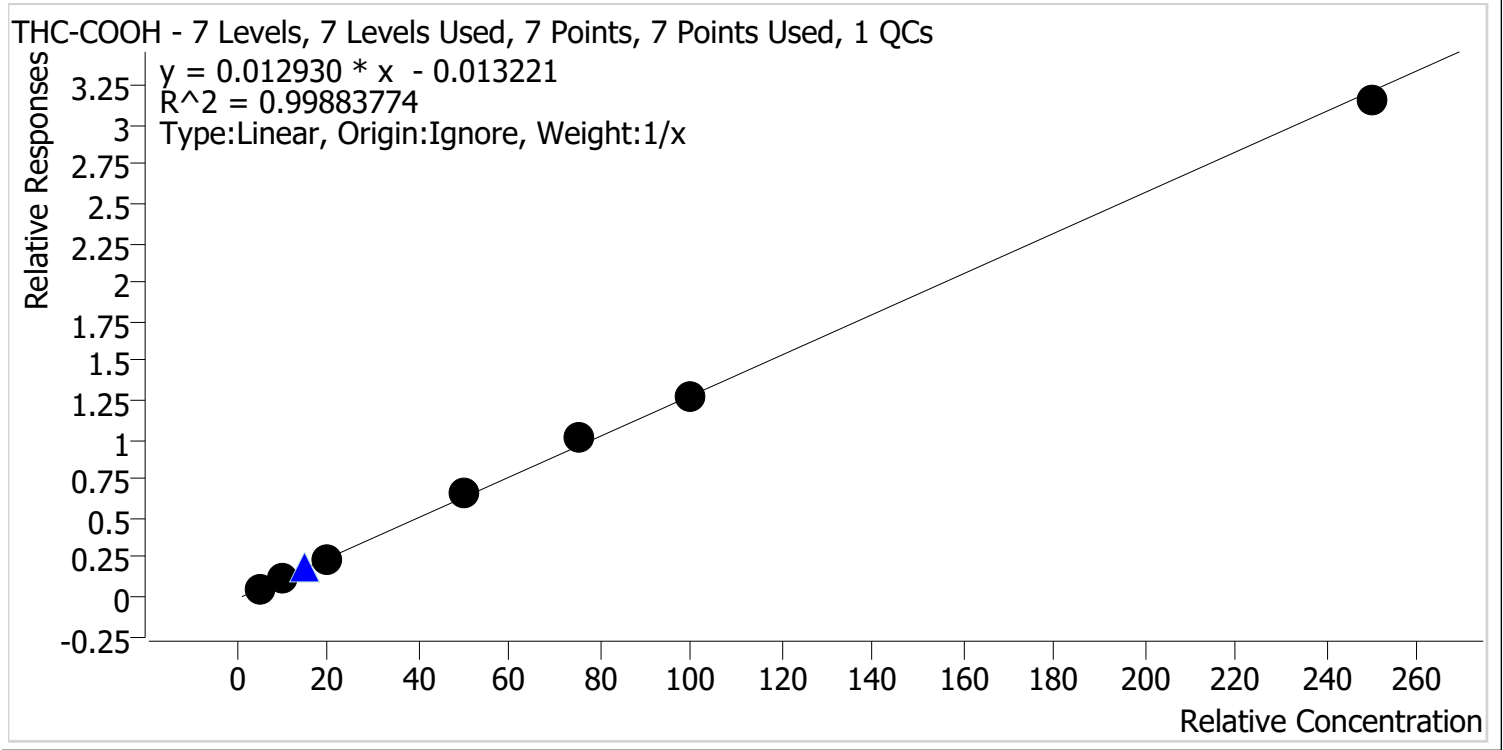
Sample	Level	Enabled	Expected Concentration	Final Concentration	Accuracy
MJ Cal 1_Plate 1	1	✓	1.0	0.8	77.7
MJ Cal 2_Plate 1	2	✓	3.0	3.1	103.8
MJ Cal 3_Plate 1	3	✓	5.0	5.2	104.8
MJ Cal 4_Plate 1	4	✓	10.0	10.3	103.1
MJ Cal 5_Plate 1	5	✓	25.0	26.8	107.2
MJ Cal 6_Plate 1	6	✓	50.0	55.7	111.3
MJ Cal 7_Plate 1	7	✓	100.0	92.1	92.1

TS



AM #26 Cannabinoids Screen Calibration Curve Report

Batch results D:\MassHunter\Data\2023\AM 25 26\071223 AM 26 TS\QuantResults\AM 26 Plate 1.batch.bin
Last Cal. Update 7/13/2023 7:47 AM
Analyst Name ISP\Datastor
Analyte THC-COOH **Internal Standard** THC-COOH-D9



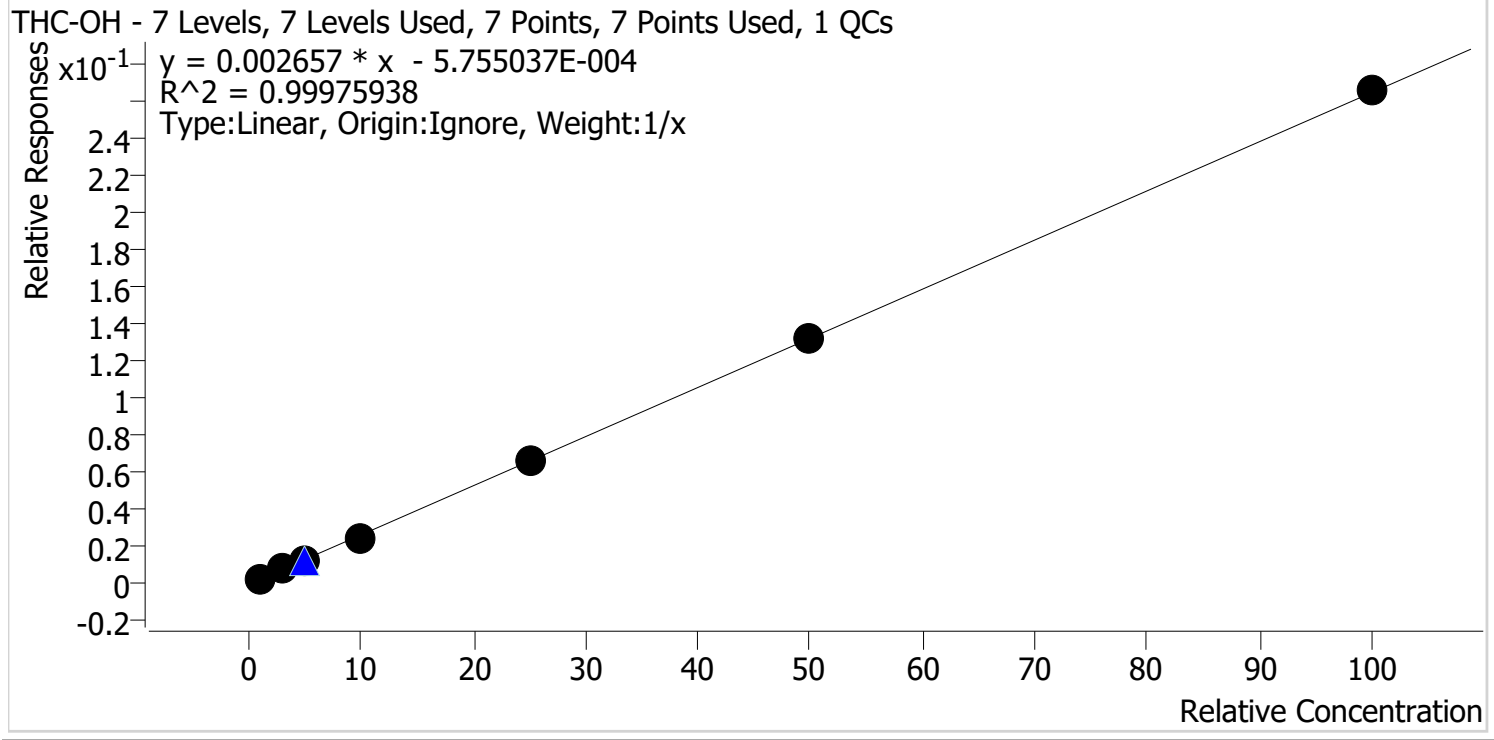
Sample	Level	Enabled	Expected Concentration	Final Concentration	Accuracy
MJ Cal 1_Plate 1	1	✓	5.0	4.9	98.9
MJ Cal 2_Plate 1	2	✓	10.0	9.9	98.9
MJ Cal 3_Plate 1	3	✓	20.0	19.0	95.2
MJ Cal 4_Plate 1	4	✓	50.0	51.4	102.8
MJ Cal 5_Plate 1	5	✓	75.0	79.5	106.0
MJ Cal 6_Plate 1	6	✓	100.0	100.0	100.0
MJ Cal 7_Plate 1	7	✓	250.0	245.2	98.1

TS



AM #26 Cannabinoids Screen Calibration Curve Report

Batch results D:\MassHunter\Data\2023\AM 25 26\071223 AM 26 TS\QuantResults\AM 26 Plate 1.batch.bin
Last Cal. Update 7/13/2023 7:47 AM
Analyst Name ISP\Datastor
Analyte THC-OH **Internal Standard** THC-OH-D3



Sample	Level	Enabled	Expected Concentration	Final Concentration	Accuracy
MJ Cal 1_Plate 1	1	✓	1.0	1.1	107.9
MJ Cal 2_Plate 1	2	✓	3.0	3.0	100.1
MJ Cal 3_Plate 1	3	✓	5.0	4.8	96.0
MJ Cal 4_Plate 1	4	✓	10.0	9.5	95.2
MJ Cal 5_Plate 1	5	✓	25.0	25.0	99.9
MJ Cal 6_Plate 1	6	✓	50.0	50.3	100.5
MJ Cal 7_Plate 1	7	✓	100.0	100.4	100.4

TS



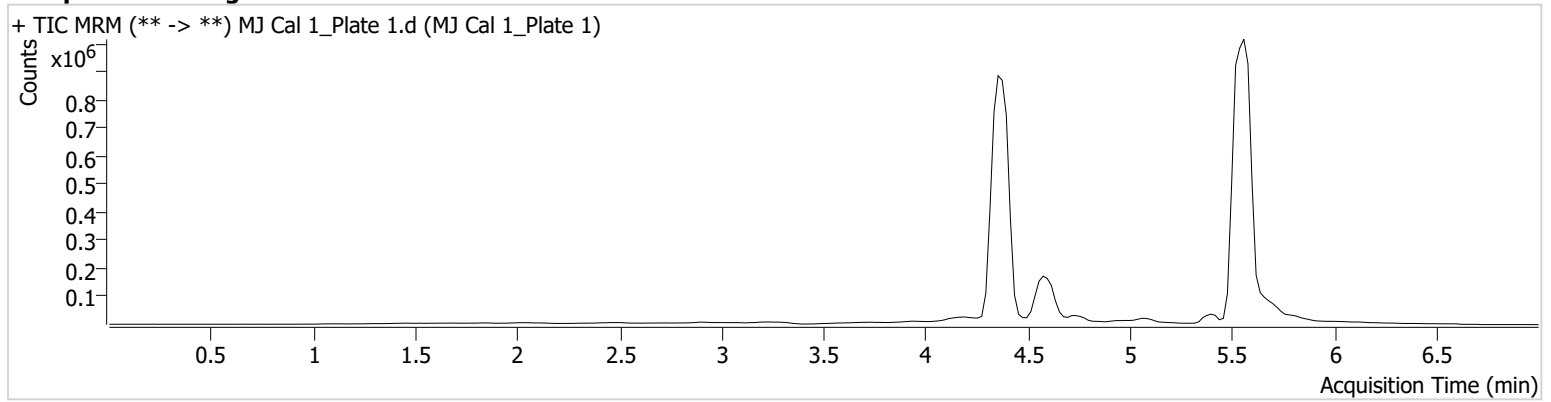
AM #26 Cannabinoids Screen Results

Batch results D:\MassHunter\Data\2023\AM 25 26\071223 AM 26 TS\QuantResults\AM 26 Plate 1.batch.bin
Calibration Last Update 7/13/2023 7:47:14 AM

Instrument Falco (069901) **Data File** MJ Cal 1_Plate 1.d
Type Cal **Sample** MJ Cal 1_Plate 1
Acq. Method AM 26 THC.m **Operator** Tamara Salazar
Sample Position P1-A1 **Comment**
Injection Volume 10
Acq. Date-Time 7/12/2023 12:58:01 PM
Sample Info.

Only drugs and concentrations listed on the laboratory report itself are appropriate to be used for interpretation purposes. Any drugs or values included in the notes but not included on the report are used by laboratory personnel to make determinations/reach conclusions within the confines of the methods.

Sample Chromatogram



Name	RT	Resp.	S/N	Ratio	S/N	ISTD Resp.	Final Conc.
THC	5.590	2418	6.53 Low	804.4 High	∞	298203	0.7772 ng/ml
THC-COOH	4.636	42690	414.75	160.9	∞	841551	4.9458 ng/ml
THC-OH	4.362	11541	15.31	770.3	∞	5034501	1.0793 ng/ml

TS



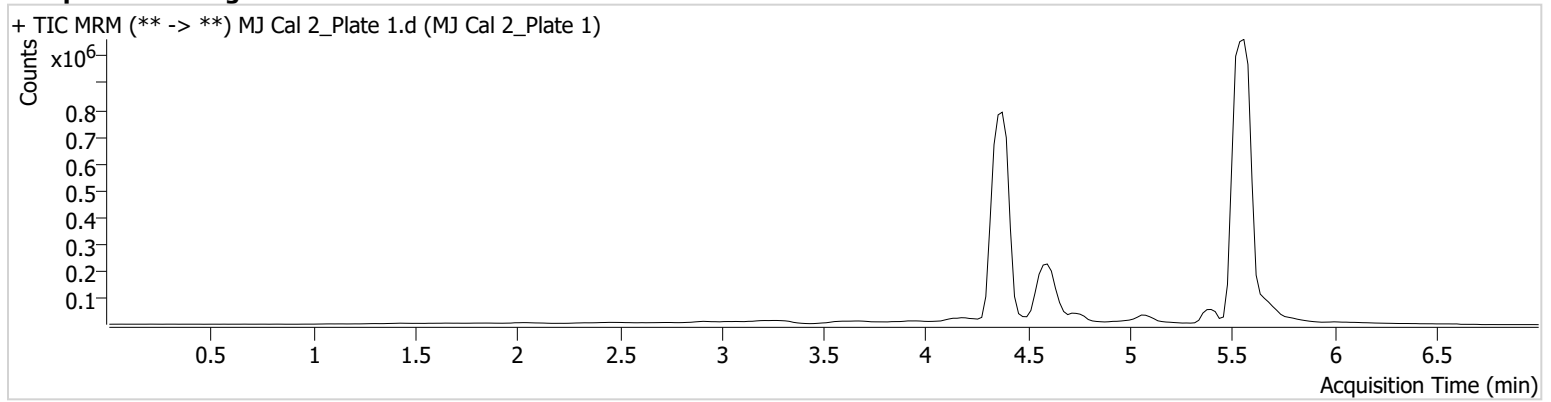
AM #26 Cannabinoids Screen Results

Batch results D:\MassHunter\Data\2023\AM 25 26\071223 AM 26 TS\QuantResults\AM 26 Plate 1.batch.bin
Calibration Last Update 7/13/2023 7:47:14 AM

Instrument Falco (069901) **Data File** MJ Cal 2_Plate 1.d
Type Cal **Sample** MJ Cal 2_Plate 1
Acq. Method AM 26 THC.m **Operator** Tamara Salazar
Sample Position P1-B1 **Comment**
Injection Volume 10
Acq. Date-Time 7/12/2023 1:05:46 PM
Sample Info.

Only drugs and concentrations listed on the laboratory report itself are appropriate to be used for interpretation purposes. Any drugs or values included in the notes but not included on the report are used by laboratory personnel to make determinations/reach conclusions within the confines of the methods.

Sample Chromatogram



Name	RT	Resp.	S/N	Ratio	S/N	ISTD Resp.	Final Conc.
THC	5.590	11241	∞	192.7	∞	455202	3.1137 ng/ml
THC-COOH	4.636	119118	142.33	156.6	∞	1038409	9.8945 ng/ml
THC-OH	4.382	32880	∞	689.4	∞	4441985	3.0024 ng/ml

TS



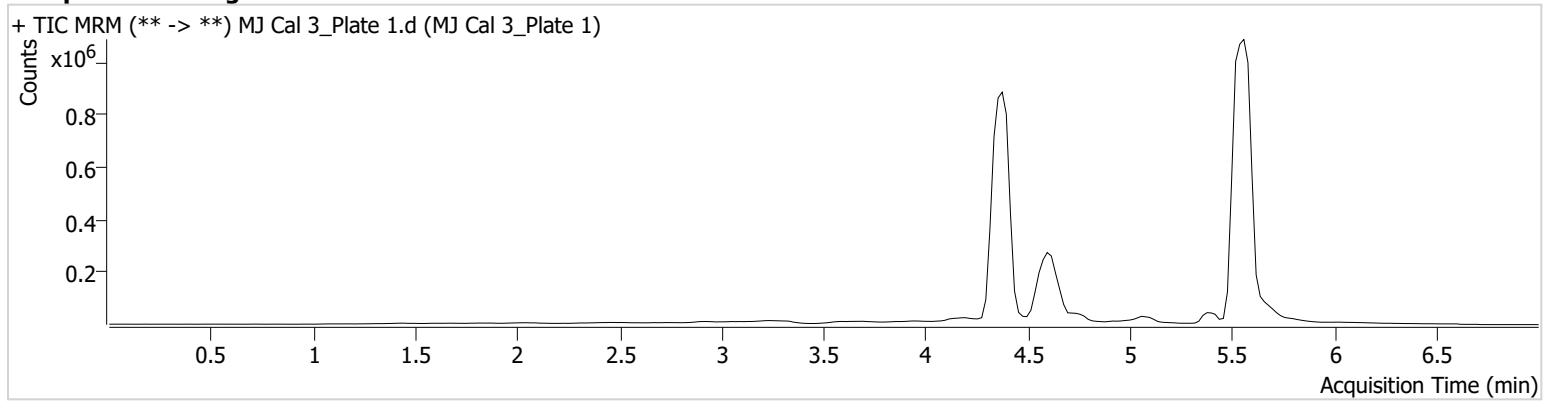
AM #26 Cannabinoids Screen Results

Batch results D:\MassHunter\Data\2023\AM 25 26\071223 AM 26 TS\QuantResults\AM 26 Plate 1.batch.bin
Calibration Last Update 7/13/2023 7:47:14 AM

Instrument Falco (069901) **Data File** MJ Cal 3_Plate 1.d
Type Cal **Sample** MJ Cal 3_Plate 1
Acq. Method AM 26 THC.m **Operator** Tamara Salazar
Sample Position P1-C1 **Comment**
Injection Volume 10
Acq. Date-Time 7/12/2023 1:13:20 PM
Sample Info.

Only drugs and concentrations listed on the laboratory report itself are appropriate to be used for interpretation purposes. Any drugs or values included in the notes but not included on the report are used by laboratory personnel to make determinations/reach conclusions within the confines of the methods.

Sample Chromatogram



Name	RT	Resp.	S/N	Ratio	S/N	ISTD Resp.	Final Conc.
THC	5.590	14983	∞	157.3 Low	∞	376667	5.2387 ng/ml
THC-COOH	4.636	251031	80.33	150.9	∞	1077014	19.0493 ng/ml
THC-OH	4.382	57711	∞	682.4	303.43	4740889	4.7979 ng/ml

TS



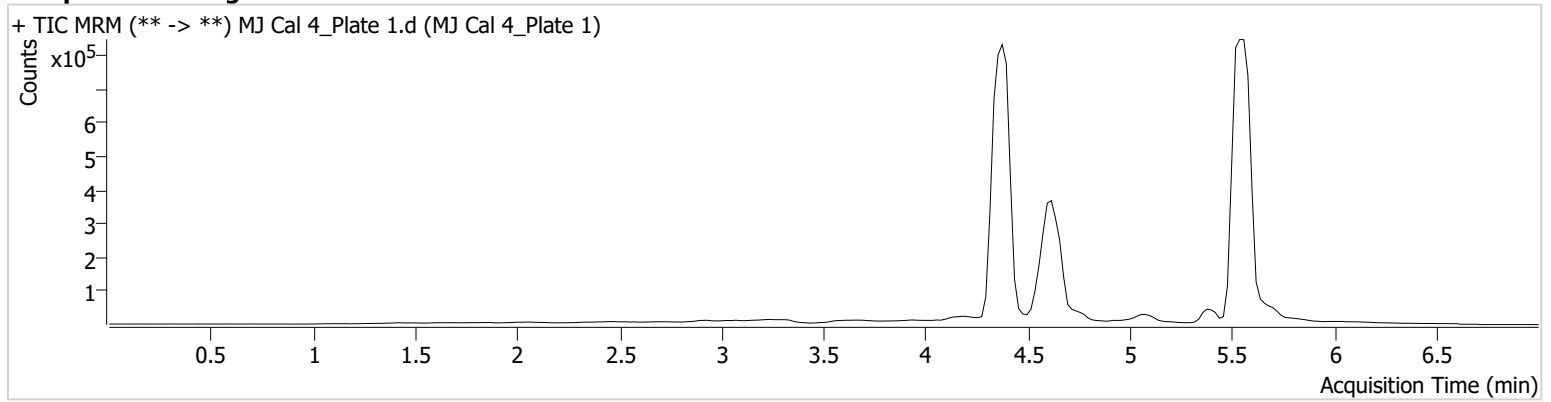
AM #26 Cannabinoids Screen Results

Batch results D:\MassHunter\Data\2023\AM 25 26\071223 AM 26 TS\QuantResults\AM 26 Plate 1.batch.bin
Calibration Last Update 7/13/2023 7:47:14 AM

Instrument Falco (069901) **Data File** MJ Cal 4_Plate 1.d
Type Cal **Sample** MJ Cal 4_Plate 1
Acq. Method AM 26 THC.m **Operator** Tamara Salazar
Sample Position P1-D1 **Comment**
Injection Volume 10
Acq. Date-Time 7/12/2023 1:20:54 PM
Sample Info.

Only drugs and concentrations listed on the laboratory report itself are appropriate to be used for interpretation purposes. Any drugs or values included in the notes but not included on the report are used by laboratory personnel to make determinations/reach conclusions within the confines of the methods.

Sample Chromatogram



Name	RT	Resp.	S/N	Ratio	S/N	ISTD Resp.	Final Conc.
THC	5.590	21518	∞	92.0 Low	∞	284058	10.3070 ng/ml
THC-COOH	4.636	572948	∞	148.8	∞	879537	51.4043 ng/ml
THC-OH	4.402	102167	∞	676.4	∞	4131123	9.5242 ng/ml

TS



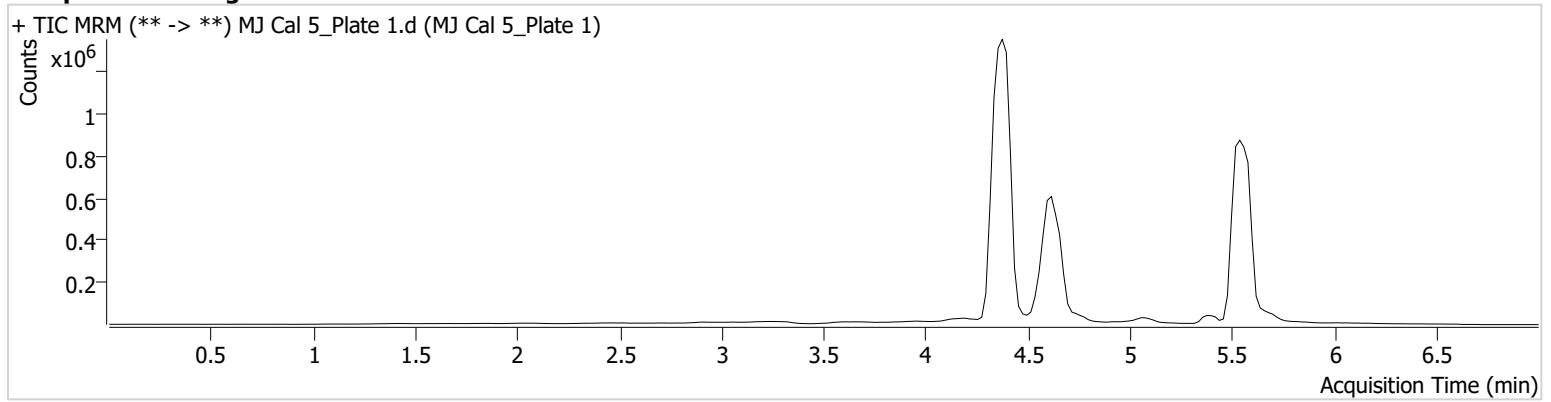
AM #26 Cannabinoids Screen Results

Batch results D:\MassHunter\Data\2023\AM 25 26\071223 AM 26 TS\QuantResults\AM 26 Plate 1.batch.bin
Calibration Last Update 7/13/2023 7:47:14 AM

Instrument Falco (069901) **Data File** MJ Cal 5_Plate 1.d
Type Cal **Sample** MJ Cal 5_Plate 1
Acq. Method AM 26 THC.m **Operator** Tamara Salazar
Sample Position P1-E1 **Comment**
Injection Volume 10
Acq. Date-Time 7/12/2023 1:28:27 PM
Sample Info.

Only drugs and concentrations listed on the laboratory report itself are appropriate to be used for interpretation purposes. Any drugs or values included in the notes but not included on the report are used by laboratory personnel to make determinations/reach conclusions within the confines of the methods.

Sample Chromatogram



Name	RT	Resp.	S/N	Ratio	S/N	ISTD Resp.	Final Conc.
THC	5.510	56122	∞	51.1 Low	∞	291016	26.8030 ng/ml
THC-COOH	4.616	1069097	∞	153.1	∞	1053399	79.5164 ng/ml
THC-OH	4.382	366453	443.39	660.9	∞	5569932	24.9772 ng/ml

TS



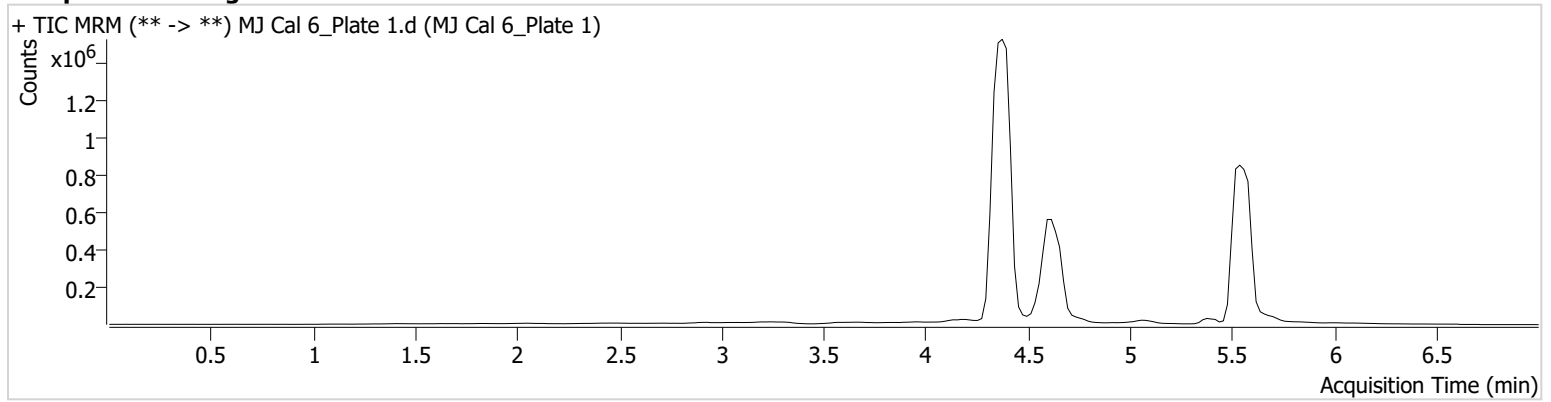
AM #26 Cannabinoids Screen Results

Batch results D:\MassHunter\Data\2023\AM 25 26\071223 AM 26 TS\QuantResults\AM 26 Plate 1.batch.bin
Calibration Last Update 7/13/2023 7:47:14 AM

Instrument Falco (069901) **Data File** MJ Cal 6_Plate 1.d
Type Cal **Sample** MJ Cal 6_Plate 1
Acq. Method AM 26 THC.m **Operator** Tamara Salazar
Sample Position P1-F1 **Comment**
Injection Volume 10
Acq. Date-Time 7/12/2023 1:36:01 PM
Sample Info.

Only drugs and concentrations listed on the laboratory report itself are appropriate to be used for interpretation purposes. Any drugs or values included in the notes but not included on the report are used by laboratory personnel to make determinations/reach conclusions within the confines of the methods.

Sample Chromatogram



Name	RT	Resp.	S/N	Ratio	S/N	ISTD Resp.	Final Conc.
THC	5.590	88954	∞	42.5 Low	∞	223621	55.6745 ng/ml
THC-COOH	4.616	1067133	∞	151.6	67.19	834062	99.9762 ng/ml
THC-OH	4.382	630912	∞	647.5	511.74	4744775	50.2598 ng/ml

TS



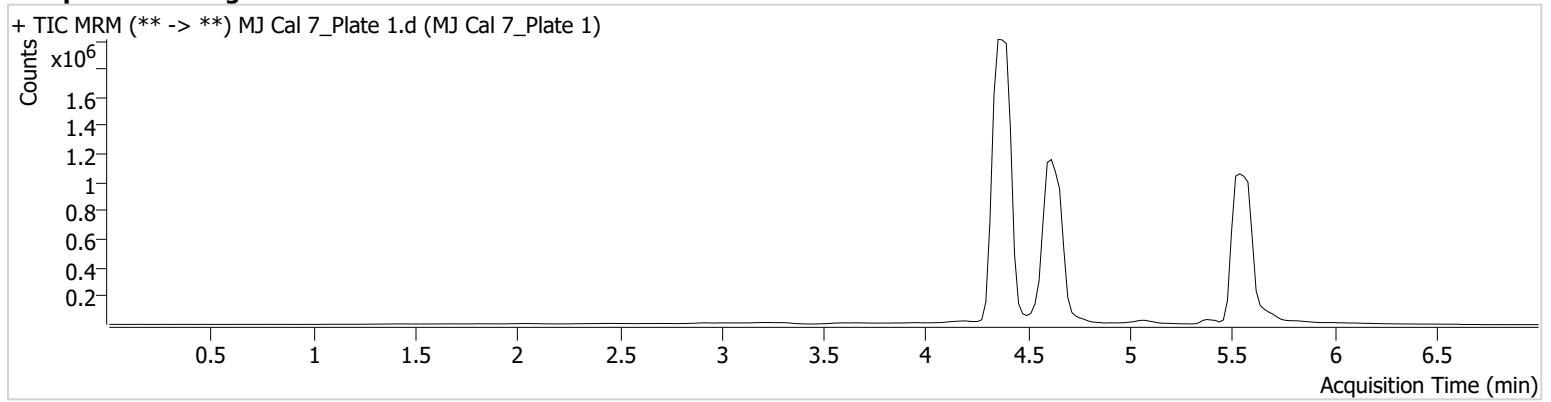
AM #26 Cannabinoids Screen Results

Batch results D:\MassHunter\Data\2023\AM 25 26\071223 AM 26 TS\QuantResults\AM 26 Plate 1.batch.bin
Calibration Last Update 7/13/2023 7:47:14 AM

Instrument Falco (069901) **Data File** MJ Cal 7_Plate 1.d
Type Cal **Sample** MJ Cal 7_Plate 1
Acq. Method AM 26 THC.m **Operator** Tamara Salazar
Sample Position P1-G1 **Comment**
Injection Volume 10
Acq. Date-Time 7/12/2023 1:43:35 PM
Sample Info.

Only drugs and concentrations listed on the laboratory report itself are appropriate to be used for interpretation purposes. Any drugs or values included in the notes but not included on the report are used by laboratory personnel to make determinations/reach conclusions within the confines of the methods.

Sample Chromatogram



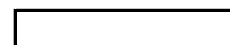
Name	RT	Resp.	S/N	Ratio	S/N	ISTD Resp.	Final Conc.
THC	5.590	105590	∞	55.2 Low	∞	160899	92.0860 ng/ml
THC-COOH	4.616	2590505	∞	152.4	∞	820476	245.2136 ng/ml
THC-OH	4.382	1125569	∞	664.8	∞	4230050	100.3592 ng/ml

Analytical Plate Map-Plate 2

TS

	1	2	3	4	5	6
A	IS + Cal. 1		P2023-1794-1	P2023-1885-1	P2023-1931-1	IS + QC_1
B	IS + Cal. 2	Neg Blood	P2023-1795-1	P2023-1892-1	P2023-1932-1	IS + Cal. 7
C	IS + Cal. 3	P2023-1607-1	P2023-1796-1	P2023-1893-1	P2023-1933-1	IS + Cal. 6
D	IS + Cal. 4	P2023-1675-1	P2023-1797-1	P2023-1894-1	P2023-1934-1	IS + Cal. 5
E	IS + Cal. 5	P2023-1719-1	P2023-1831-1	P2023-1904-1	P2023-1945-1	IS + Cal. 4
F	IS + Cal. 6	P2023-1788-2	P2023-1835-1	P2023-1919-1	P2023-1984-1	IS + Cal. 3
G	IS + Cal. 7	P2023-1789-1	P2023-1867-1	P2023-1920-1	P2023-1985-1	IS + Cal. 2
H	IS + QC_1	P2023-1790-1	P2023-1879-1	P2023-1923-1	IS + QC_1	IS + Cal. 1

All wells to contain 100 µl of residual DMSO

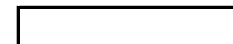


SLE Plate Map-Plate 2

TS

	1	2	3	4	5	6
A	IS + Cal. 1		P2023-1794-1	P2023-1885-1	P2023-1931-1	
B	IS + Cal. 2	Neg Blood	P2023-1795-1	P2023-1892-1	P2023-1932-1	
C	IS + Cal. 3	P2023-1607-1	P2023-1796-1	P2023-1893-1	P2023-1933-1	
D	IS + Cal. 4	P2023-1675-1	P2023-1797-1	P2023-1894-1*	P2023-1934-1	
E	IS + Cal. 5	P2023-1719-1	P2023-1831-1	P2023-1904-1	P2023-1945-1	
F	IS + Cal. 6	P2023-1788-2	P2023-1835-1	P2023-1919-1	P2023-1984-1	
G	IS + Cal. 7	P2023-1789-1	P2023-1867-1	P2023-1920-1	P2023-1985-1	
H	IS + QC_1	P2023-1790-1	P2023-1879-1	P2023-1923-1	P2023-1894-1*	

*Sample moved during step 7 of the extraction due to a blood clot.



TS



AM #26 Cannabinoids Screen Results

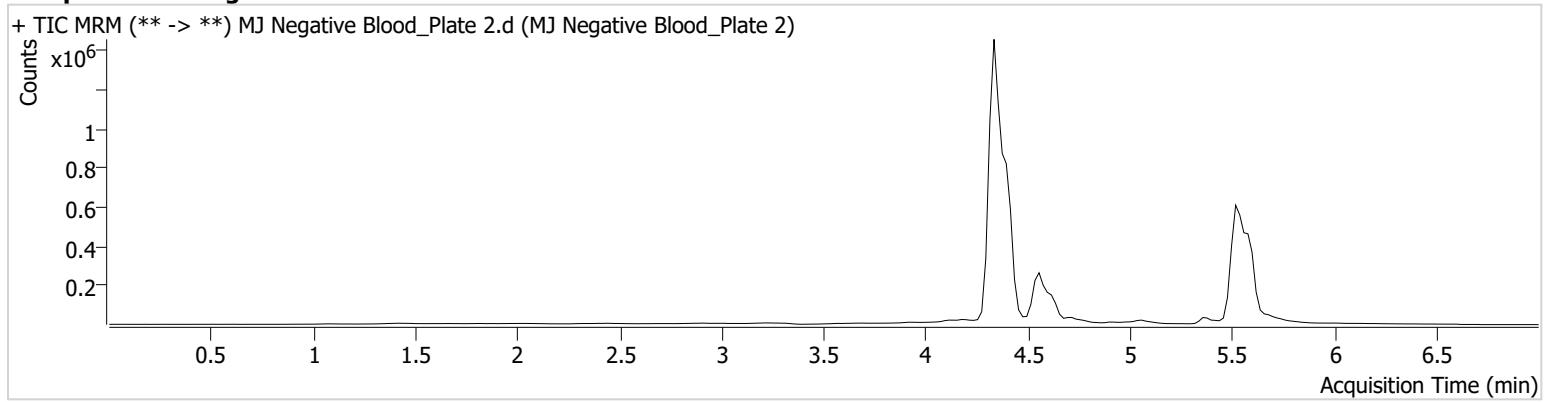
Batch results D:\MassHunter\Data\2023\AM 25 26\071223 AM 26 TS\QuantResults\AM 26 Plate 2.batch.bin
Calibration Last Update 7/13/2023 8:09:28 AM

Instrument Falco (069901)
Type Sample
Acq. Method AM 26 THC.m
Sample Position P5-B2
Injection Volume 10
Acq. Date-Time 7/12/2023 7:24:40 PM
Sample Info.

Data File MJ Negative Blood_Plate 2.d
Sample MJ Negative Blood_Plate 2
Operator Tamara Salazar
Comment

Only drugs and concentrations listed on the laboratory report itself are appropriate to be used for interpretation purposes. Any drugs or values included in the notes but not included on the report are used by laboratory personnel to make determinations/reach conclusions within the confines of the methods.

Sample Chromatogram



TS



AM #26 Cannabinoids Screen Results

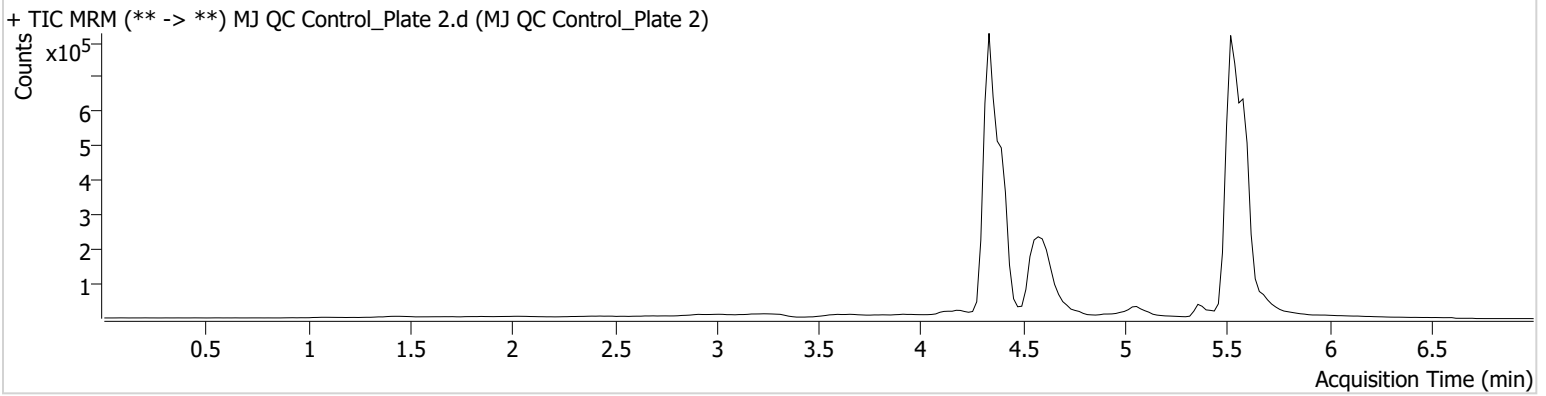
Batch results D:\MassHunter\Data\2023\AM 25 26\071223 AM 26 TS\QuantResults\AM 26 Plate 2.batch.bin
Calibration Last Update 7/13/2023 8:09:28 AM

Instrument Falco (069901)
Type QC
Acq. Method AM 26 THC.m
Sample Position P5-H1
Injection Volume 10
Acq. Date-Time 7/12/2023 7:09:31 PM
Sample Info.

Data File MJ QC Control_Plate 2.d
Sample MJ QC Control_Plate 2
Operator Tamara Salazar
Comment

Only drugs and concentrations listed on the laboratory report itself are appropriate to be used for interpretation purposes. Any drugs or values included in the notes but not included on the report are used by laboratory personnel to make determinations/reach conclusions within the confines of the methods.

Sample Chromatogram



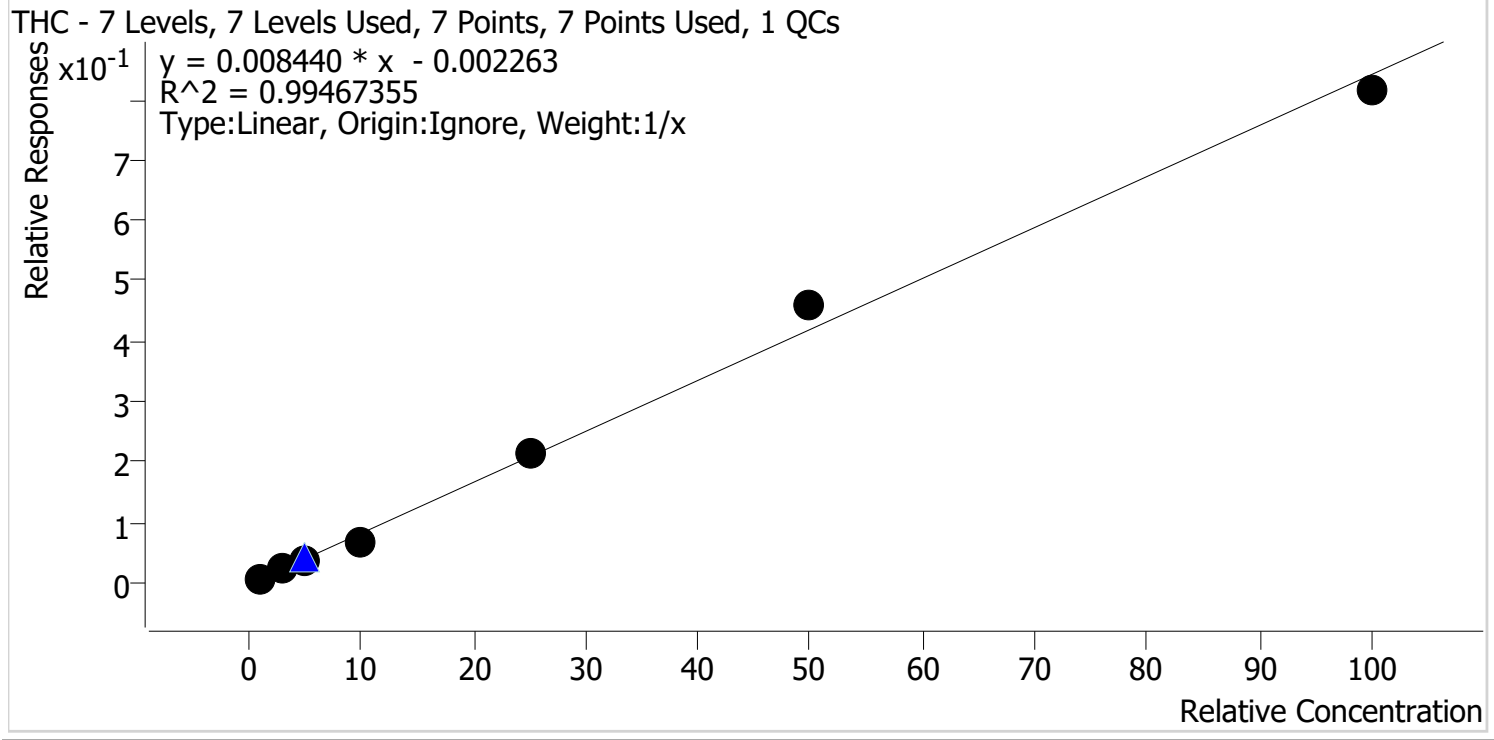
Name	RT	Resp.	S/N	Ratio	S/N	ISTD Resp.	Final Conc.
THC	5.510	9818	10.62	185.2	∞	224760	5.4442 ng/ml
THC-COOH	4.596	218487	∞	157.0	∞	1050911	15.1270 ng/ml
THC-OH	4.342	47815	140.37	696.7	∞	4343591	4.5222 ng/ml

TS



AM #26 Cannabinoids Screen Calibration Curve Report

Batch results D:\MassHunter\Data\2023\AM 25 26\071223 AM 26 TS\QuantResults\AM 26 Plate 2.batch.bin
 Last Cal. Update 7/13/2023 8:09 AM
 Analyst Name ISP\Datastor
 Analyte THC Internal Standard THC-D3



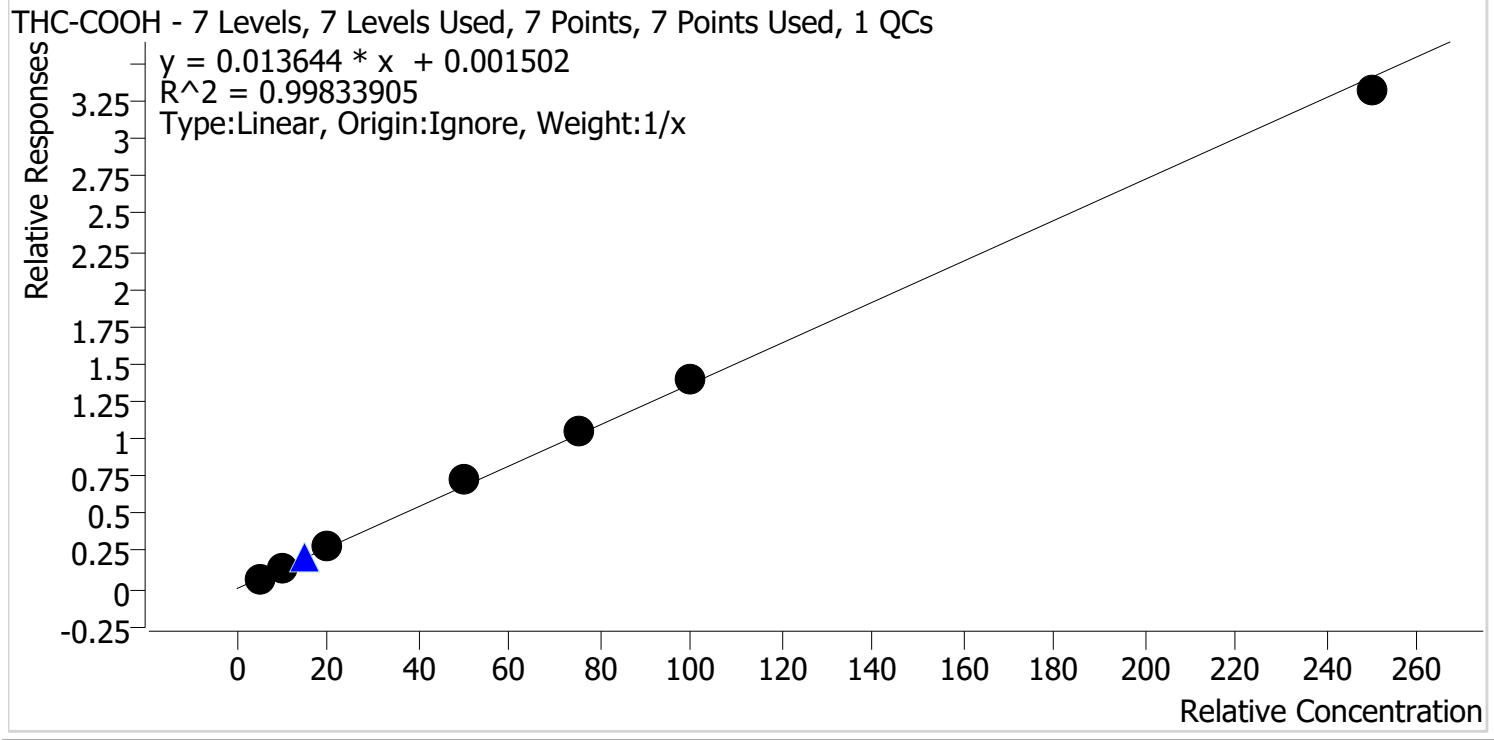
Sample	Level	Enabled	Expected Concentration	Final Concentration	Accuracy
MJ Cal 1_Plate 2	1	✓	1.0	1.1	110.3
MJ Cal 2_Plate 2	2	✓	3.0	3.2	105.0
MJ Cal 3_Plate 2	3	✓	5.0	4.8	95.1
MJ Cal 4_Plate 2	4	✓	10.0	8.2	81.7
MJ Cal 5_Plate 2	5	✓	25.0	25.5	102.0
MJ Cal 6_Plate 2	6	✓	50.0	54.5	109.0
MJ Cal 7_Plate 2	7	✓	100.0	96.8	96.8

TS



AM #26 Cannabinoids Screen Calibration Curve Report

Batch results D:\MassHunter\Data\2023\AM 25 26\071223 AM 26 TS\QuantResults\AM 26 Plate 2.batch.bin
Last Cal. Update 7/13/2023 8:09 AM
Analyst Name ISP\Datastor
Analyte THC-COOH **Internal Standard** THC-COOH-D9



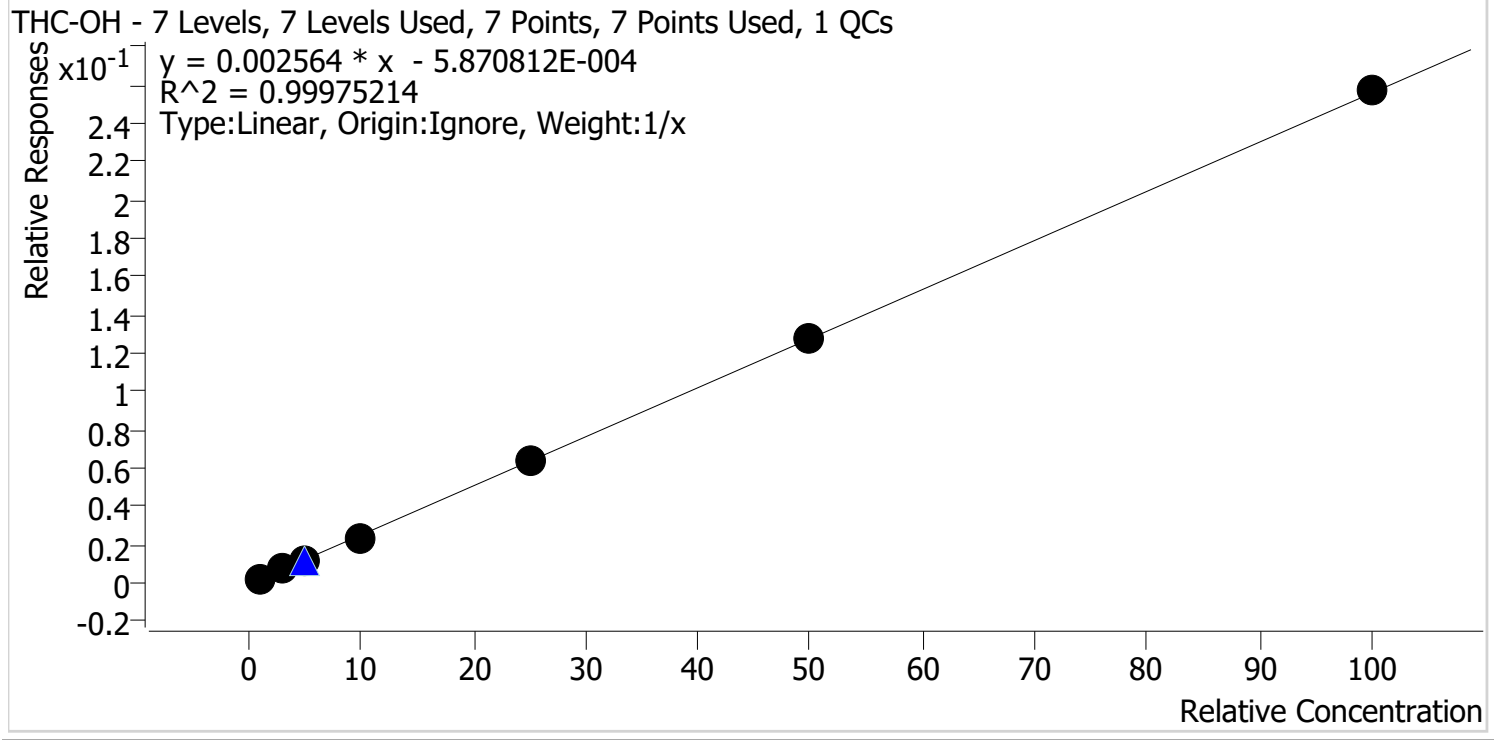
Sample	Level	Enabled	Expected Concentration	Final Concentration	Accuracy
MJ Cal 1_Plate 2	1	✓	5.0	4.7	94.9
MJ Cal 2_Plate 2	2	✓	10.0	9.1	90.7
MJ Cal 3_Plate 2	3	✓	20.0	21.4	106.8
MJ Cal 4_Plate 2	4	✓	50.0	53.3	106.6
MJ Cal 5_Plate 2	5	✓	75.0	76.6	102.1
MJ Cal 6_Plate 2	6	✓	100.0	101.6	101.6
MJ Cal 7_Plate 2	7	✓	250.0	243.4	97.3

TS



AM #26 Cannabinoids Screen Calibration Curve Report

Batch results D:\MassHunter\Data\2023\AM 25 26\071223 AM 26 TS\QuantResults\AM 26 Plate 2.batch.bin
Last Cal. Update 7/13/2023 8:09 AM
Analyst Name ISP\Datastor
Analyte THC-OH **Internal Standard** THC-OH-D3



Sample	Level	Enabled	Expected Concentration	Final Concentration	Accuracy
MJ Cal 1_Plate 2	1	✓	1.0	1.1	109.5
MJ Cal 2_Plate 2	2	✓	3.0	2.9	98.2
MJ Cal 3_Plate 2	3	✓	5.0	4.8	96.2
MJ Cal 4_Plate 2	4	✓	10.0	9.5	95.4
MJ Cal 5_Plate 2	5	✓	25.0	25.0	100.0
MJ Cal 6_Plate 2	6	✓	50.0	50.2	100.3
MJ Cal 7_Plate 2	7	✓	100.0	100.5	100.5

TS



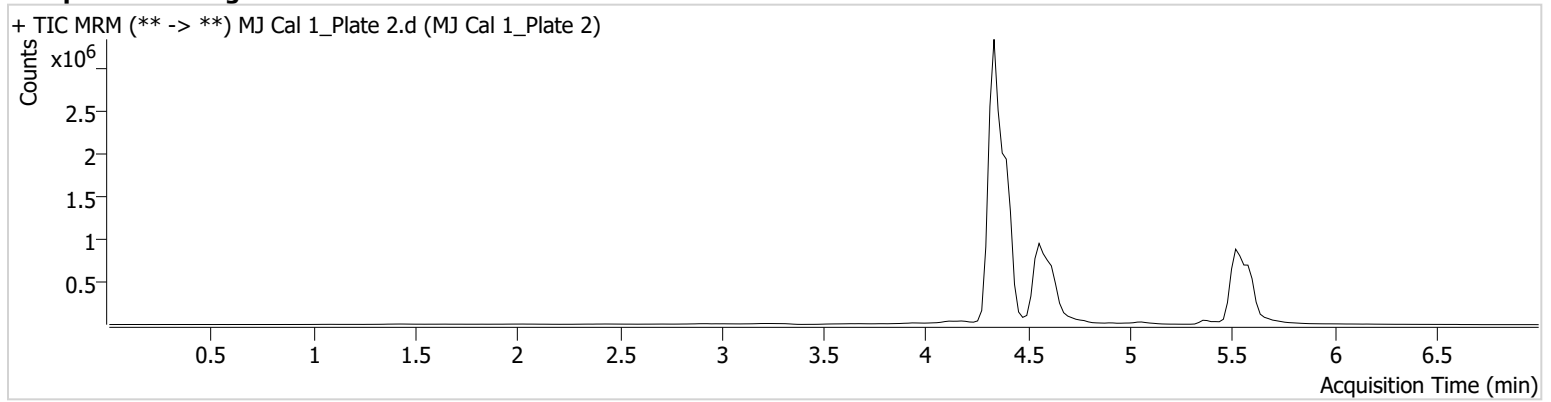
AM #26 Cannabinoids Screen Results

Batch results D:\MassHunter\Data\2023\AM 25 26\071223 AM 26 TS\QuantResults\AM 26 Plate 2.batch.bin
Calibration Last Update 7/13/2023 8:09:28 AM

Instrument Falco (069901) **Data File** MJ Cal 1_Plate 2.d
Type Cal **Sample** MJ Cal 1_Plate 2
Acq. Method AM 26 THC.m **Operator** Tamara Salazar
Sample Position P5-A1 **Comment**
Injection Volume 10
Acq. Date-Time 7/12/2023 6:16:14 PM
Sample Info.

Only drugs and concentrations listed on the laboratory report itself are appropriate to be used for interpretation purposes. Any drugs or values included in the notes but not included on the report are used by laboratory personnel to make determinations/reach conclusions within the confines of the methods.

Sample Chromatogram



Name	RT	Resp.	S/N	Ratio	S/N	ISTD Resp.	Final Conc.
THC	5.489	2788	4.45 Low	604.5 High	∞	395519	1.1034 ng/ml
THC-COOH	4.596	345083	∞	154.1	∞	5209565	4.7446 ng/ml
THC-OH	4.342	40516	52.05	727.2	472.94	18248728	1.0948 ng/ml

TS



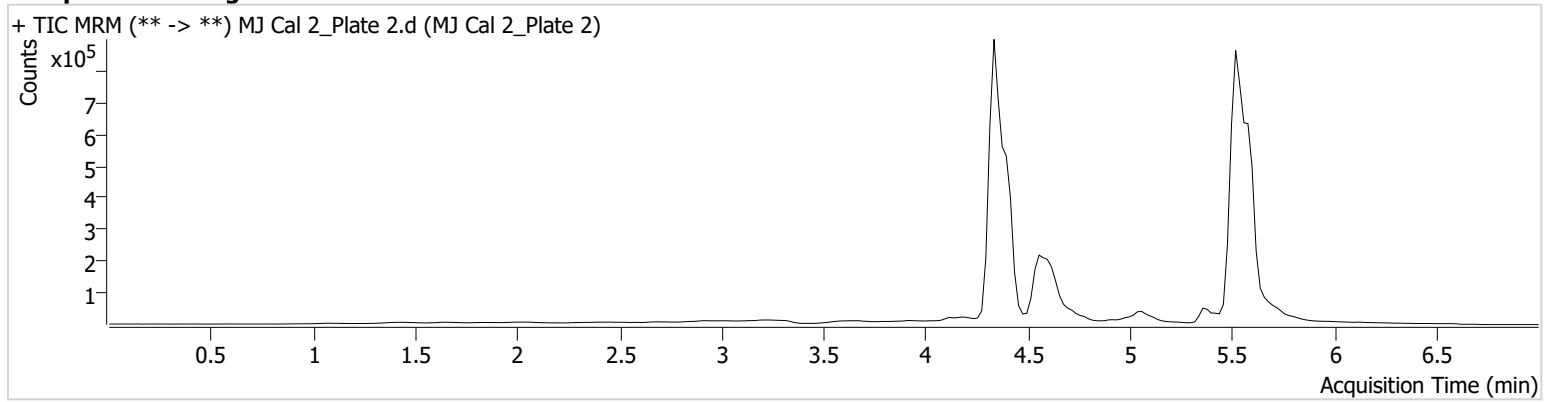
AM #26 Cannabinoids Screen Results

Batch results D:\MassHunter\Data\2023\AM 25 26\071223 AM 26 TS\QuantResults\AM 26 Plate 2.batch.bin
Calibration Last Update 7/13/2023 8:09:28 AM

Instrument Falco (069901) **Data File** MJ Cal 2_Plate 2.d
Type Cal **Sample** MJ Cal 2_Plate 2
Acq. Method AM 26 THC.m **Operator** Tamara Salazar
Sample Position P5-B1 **Comment**
Injection Volume 10
Acq. Date-Time 7/12/2023 6:24:05 PM
Sample Info.

Only drugs and concentrations listed on the laboratory report itself are appropriate to be used for interpretation purposes. Any drugs or values included in the notes but not included on the report are used by laboratory personnel to make determinations/reach conclusions within the confines of the methods.

Sample Chromatogram



Name	RT	Resp.	S/N	Ratio	S/N	ISTD Resp.	Final Conc.
THC	5.489	10815	∞	157.6	∞	444642	3.1502 ng/ml
THC-COOH	4.596	138614	∞	160.8	57.72	1106929	9.0676 ng/ml
THC-OH	4.342	33142	∞	706.4	∞	4759254	2.9448 ng/ml

TS



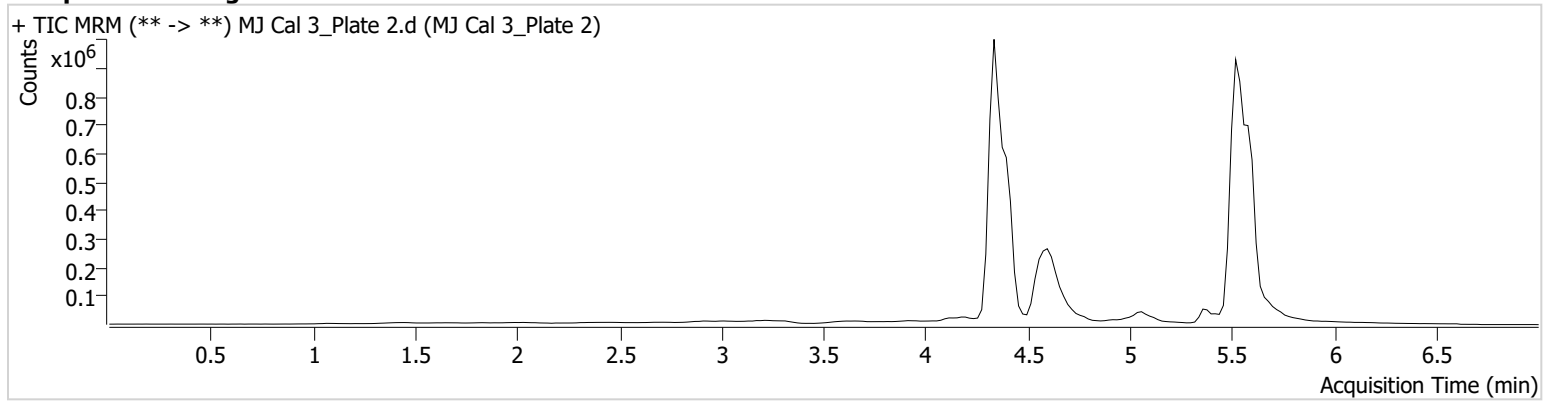
AM #26 Cannabinoids Screen Results

Batch results D:\MassHunter\Data\2023\AM 25 26\071223 AM 26 TS\QuantResults\AM 26 Plate 2.batch.bin
Calibration Last Update 7/13/2023 8:09:28 AM

Instrument Falco (069901) **Data File** MJ Cal 3_Plate 2.d
Type Cal **Sample** MJ Cal 3_Plate 2
Acq. Method AM 26 THC.m **Operator** Tamara Salazar
Sample Position P5-C1 **Comment**
Injection Volume 10
Acq. Date-Time 7/12/2023 6:31:40 PM
Sample Info.

Only drugs and concentrations listed on the laboratory report itself are appropriate to be used for interpretation purposes. Any drugs or values included in the notes but not included on the report are used by laboratory personnel to make determinations/reach conclusions within the confines of the methods.

Sample Chromatogram



Name	RT	Resp.	S/N	Ratio	S/N	ISTD Resp.	Final Conc.
THC	5.489	14754	63.53	135.6	∞	389634	4.7549 ng/ml
THC-COOH	4.596	303050	∞	154.5	∞	1034355	21.3627 ng/ml
THC-OH	4.342	60596	∞	684.2	∞	5158276	4.8104 ng/ml

TS



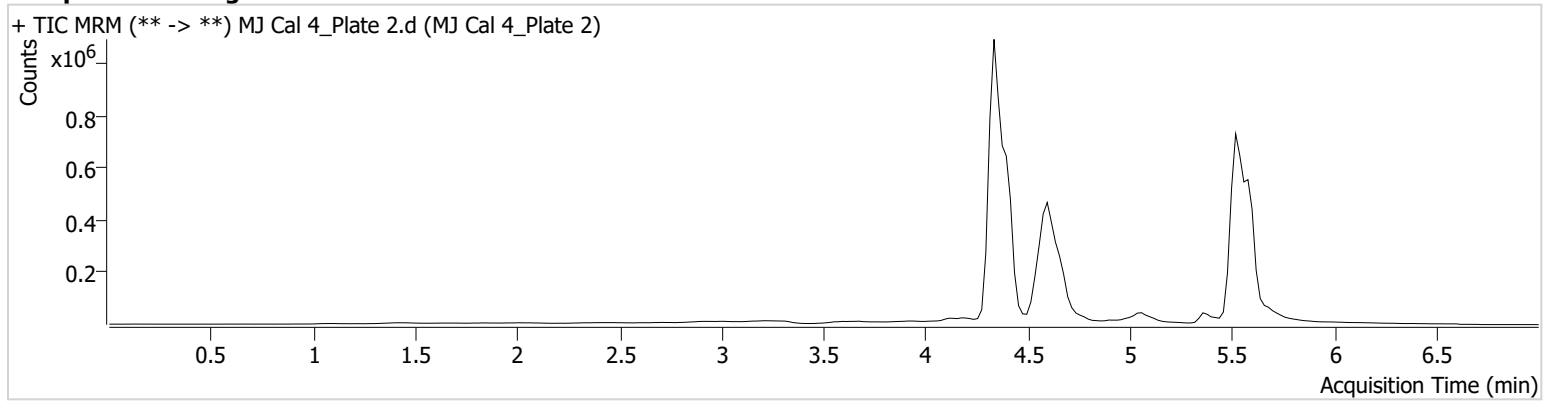
AM #26 Cannabinoids Screen Results

Batch results D:\MassHunter\Data\2023\AM 25 26\071223 AM 26 TS\QuantResults\AM 26 Plate 2.batch.bin
Calibration Last Update 7/13/2023 8:09:28 AM

Instrument Falco (069901) **Data File** MJ Cal 4_Plate 2.d
Type Cal **Sample** MJ Cal 4_Plate 2
Acq. Method AM 26 THC.m **Operator** Tamara Salazar
Sample Position P5-D1 **Comment**
Injection Volume 10
Acq. Date-Time 7/12/2023 6:39:13 PM
Sample Info.

Only drugs and concentrations listed on the laboratory report itself are appropriate to be used for interpretation purposes. Any drugs or values included in the notes but not included on the report are used by laboratory personnel to make determinations/reach conclusions within the confines of the methods.

Sample Chromatogram



Name	RT	Resp.	S/N	Ratio	S/N	ISTD Resp.	Final Conc.
THC	5.509	22083	∞	87.9 Low	∞	331099	8.1708 ng/ml
THC-COOH	4.596	787873	∞	149.0	∞	1081466	53.2831 ng/ml
THC-OH	4.342	124135	∞	682.5	∞	5199479	9.5401 ng/ml

TS



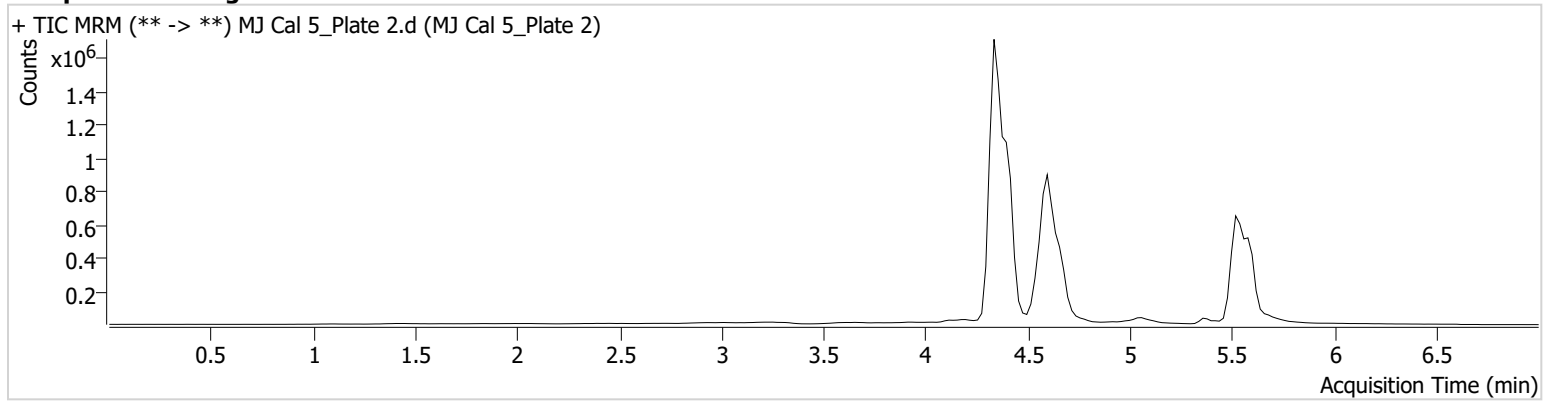
AM #26 Cannabinoids Screen Results

Batch results D:\MassHunter\Data\2023\AM 25 26\071223 AM 26 TS\QuantResults\AM 26 Plate 2.batch.bin
Calibration Last Update 7/13/2023 8:09:28 AM

Instrument Falco (069901) **Data File** MJ Cal 5_Plate 2.d
Type Cal **Sample** MJ Cal 5_Plate 2
Acq. Method AM 26 THC.m **Operator** Tamara Salazar
Sample Position P5-E1 **Comment**
Injection Volume 10
Acq. Date-Time 7/12/2023 6:46:48 PM
Sample Info.

Only drugs and concentrations listed on the laboratory report itself are appropriate to be used for interpretation purposes. Any drugs or values included in the notes but not included on the report are used by laboratory personnel to make determinations/reach conclusions within the confines of the methods.

Sample Chromatogram



Name	RT	Resp.	S/N	Ratio	S/N	ISTD Resp.	Final Conc.
THC	5.510	63745	∞	43.9 Low	∞	299294	25.5039 ng/ml
THC-COOH	4.596	1605511	∞	151.7	∞	1534159	76.5882 ng/ml
THC-OH	4.342	432999	∞	655.6	∞	6818705	24.9947 ng/ml

TS



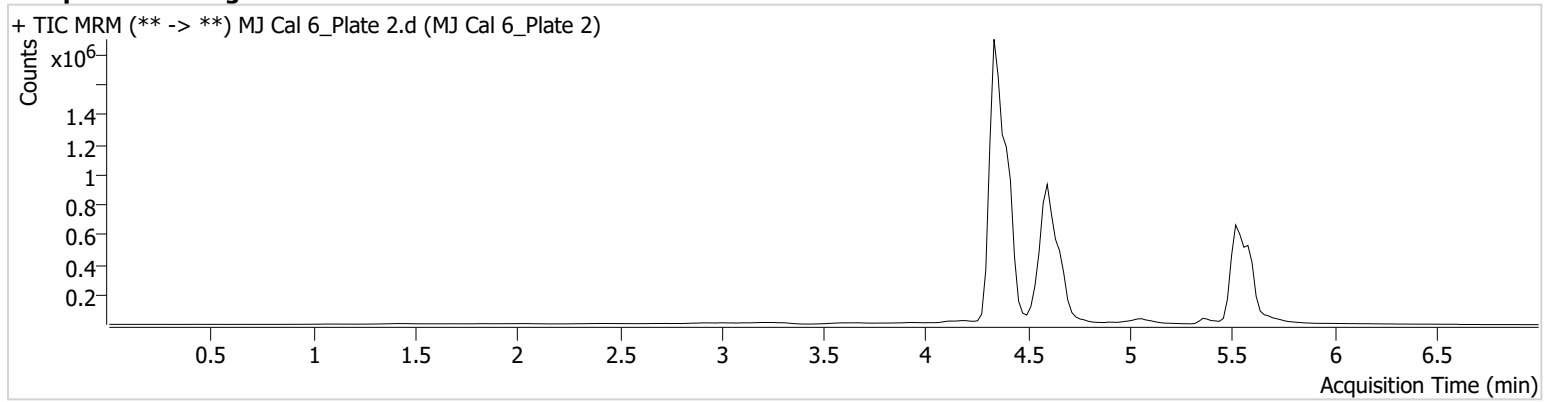
AM #26 Cannabinoids Screen Results

Batch results D:\MassHunter\Data\2023\AM 25 26\071223 AM 26 TS\QuantResults\AM 26 Plate 2.batch.bin
Calibration Last Update 7/13/2023 8:09:28 AM

Instrument Falco (069901) **Data File** MJ Cal 6_Plate 2.d
Type Cal **Sample** MJ Cal 6_Plate 2
Acq. Method AM 26 THC.m **Operator** Tamara Salazar
Sample Position P5-F1 **Comment**
Injection Volume 10
Acq. Date-Time 7/12/2023 6:54:22 PM
Sample Info.

Only drugs and concentrations listed on the laboratory report itself are appropriate to be used for interpretation purposes. Any drugs or values included in the notes but not included on the report are used by laboratory personnel to make determinations/reach conclusions within the confines of the methods.

Sample Chromatogram



Name	RT	Resp.	S/N	Ratio	S/N	ISTD Resp.	Final Conc.
THC	5.510	134628	∞	34.0 Low	30.16	294058	54.5145 ng/ml
THC-COOH	4.596	1752667	∞	152.9	∞	1263074	101.5881 ng/ml
THC-OH	4.342	723384	∞	659.0	107.79	5651198	50.1513 ng/ml

TS



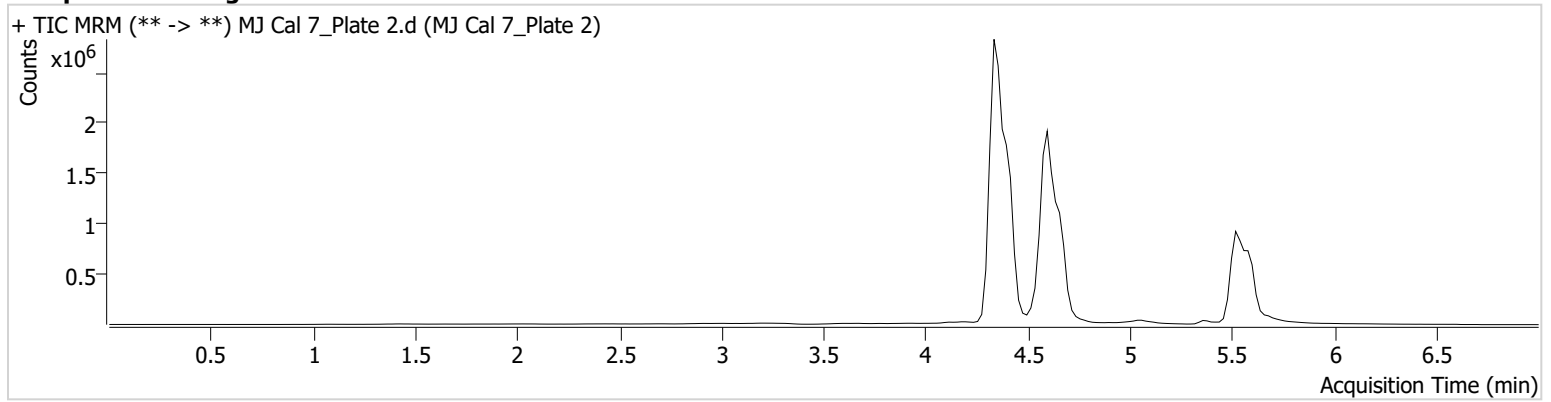
AM #26 Cannabinoids Screen Results

Batch results D:\MassHunter\Data\2023\AM 25 26\071223 AM 26 TS\QuantResults\AM 26 Plate 2.batch.bin
Calibration Last Update 7/13/2023 8:09:28 AM

Instrument Falco (069901) **Data File** MJ Cal 7_Plate 2.d
Type Cal **Sample** MJ Cal 7_Plate 2
Acq. Method AM 26 THC.m **Operator** Tamara Salazar
Sample Position P5-G1 **Comment**
Injection Volume 10
Acq. Date-Time 7/12/2023 7:01:55 PM
Sample Info.

Only drugs and concentrations listed on the laboratory report itself are appropriate to be used for interpretation purposes. Any drugs or values included in the notes but not included on the report are used by laboratory personnel to make determinations/reach conclusions within the confines of the methods.

Sample Chromatogram



Name	RT	Resp.	S/N	Ratio	S/N	ISTD Resp.	Final Conc.
THC	5.510	166823	∞	28.5 Low	∞	204759	96.8023 ng/ml
THC-COOH	4.596	4227892	∞	151.2	∞	1272656	243.3657 ng/ml
THC-OH	4.342	1466080	∞	667.7	∞	5704331	100.4639 ng/ml